

# CAPSTONE CONSTRUCTION

The Pinnacle of Luxury  
Company Profile





# INTRO- DUCTION

Capstone brings your vision to life by creating timeless spaces that inspire confidence and endure for generations. Our expertise lies in delivering every stage — from precise construction and fit-out works to the meticulous execution of intricate design details across residential, commercial, healthcare, and hospitality projects. Whether installing specialized dental equipment or perfecting custom joinery in a luxury home, we draw on our rich history and hands-on experience to craft spaces that stand the test of time and reflect a legacy of care, precision, and lasting quality.



# MISSION

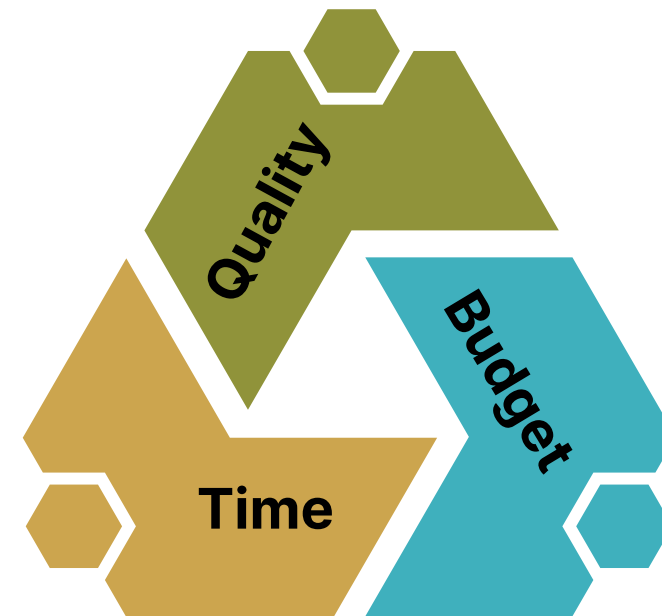
---

To deliver stress-free, high-quality construction and fit-out solutions — on time, on budget, and with clear communication every step of the way.

# VISION

---

To be the trusted partner who simplifies the building process, ensuring every client enjoys a seamless experience and a space that truly stands the test of time.







# Our History

- 2020 **FOUNDATIONS IN FIT-OUT & ELECTROMECHANICAL WORKS**  
Capstone was established in 2020, specializing in fit-out, interior, and electromechanical services across residential, commercial, retail, administrative, and healthcare sectors. We quickly earned a reputation for precision, functionality, and high-quality finishes.
- 2022 **EXPANSION INTO CONSTRUCTION**  
In 2022, we entered the construction sector to offer full turnkey execution. This allowed us to manage projects from the ground up, with tighter control over quality, timelines, and cost. We became a one-stop solution — from excavation and concrete to finishing and handover.
- 2024 **ENTRY INTO STEEL STRUCTURES & INDUSTRIAL PROJECTS**  
In 2024, we expanded into steel structure works through industrial projects in the oil and gas sector, starting with Novomet. This positioned Capstone as a fully integrated construction partner with industrial-grade capabilities.



# CERTIFICATIONS

## ISO CERTIFIED COMPANY



### SCOPE OF CERTIFICATION

General supplies, general contracting, fit-out contracting, electromechanical contracting, supply of hospital equipment.



**Occupational Health and  
Safety Management  
Systems**

---



**Environmental  
Management Systems**

---

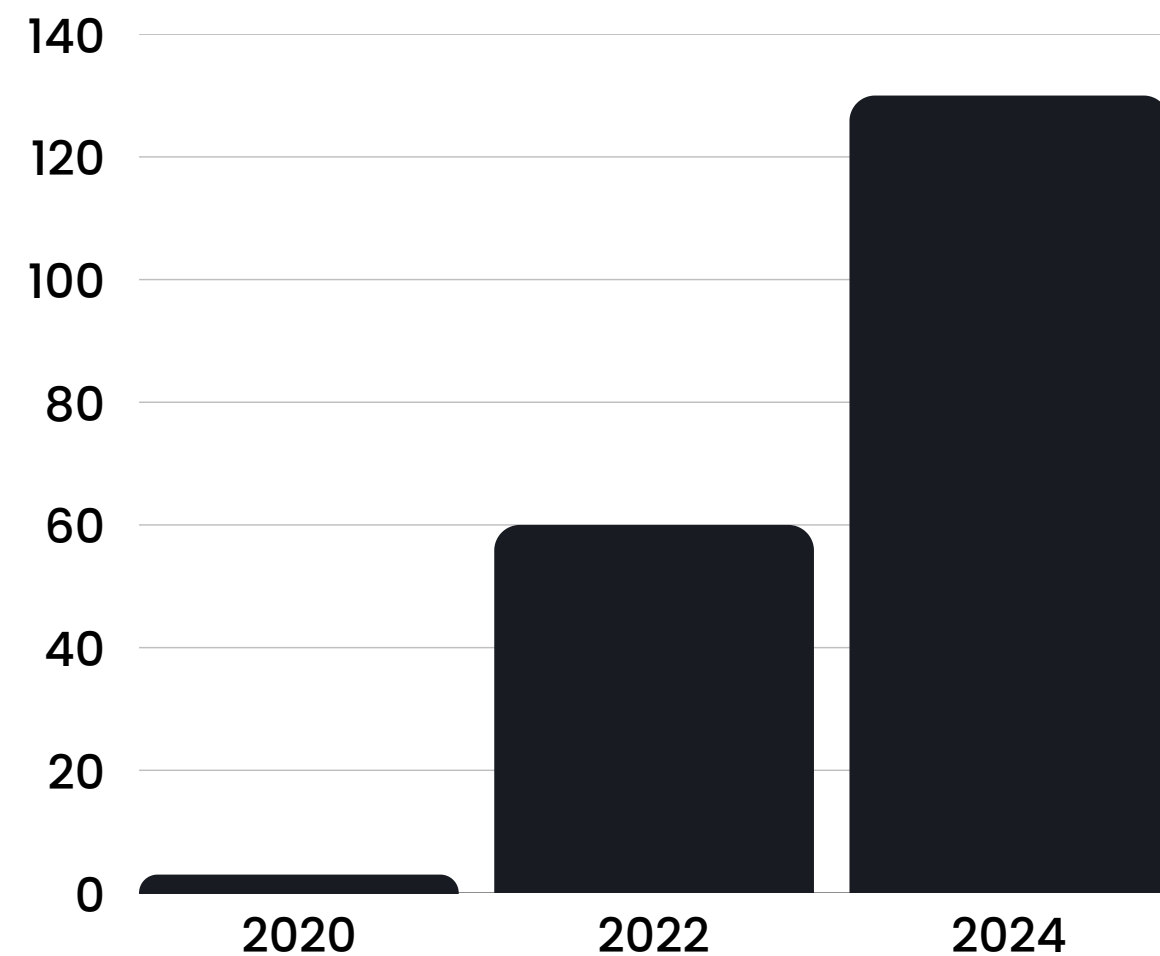


**Quality Management  
Systems**

---



# GROSS PROJECT'S BUDGET



Our project portfolio has grown year over year, with an increasing budget that reflects both client trust and our expanding capacity to deliver high-value, large-scale works across sectors.

This steady growth is driven by repeat clients, referrals, and our proven ability to meet complex project demands.

From residential to healthcare and commercial developments, each year brings larger scopes, tighter timelines, and greater responsibility — which we're proud to meet with precision and consistency.

**2020**

EGP 3M

**2022**

EGP 60M

**2024**

EGP 130M



# OUR SERVICES



01

## Construction

We provide full-scope construction services, including steel structure works, managing every phase from groundwork to final finishes with precision and efficiency. Our focus is on delivering high-quality builds that meet deadlines, budgets, and the unique vision of each client.

02

## Fit-Out & Interior

We deliver tailored fit-out solutions that transform spaces into fully functional, design-aligned environments. Whether it's a medical clinic, luxury villa, retail store, or corporate office, we manage every detail — from technical installations to final finishes — with precision and sector-specific expertise.

03

## Electro-Mechanical

Integrated electromechanical services enhance our construction and fit-out works, covering HVAC, plumbing, electrical, fire systems, and smart technologies for efficient, safe, and sustainable performance.

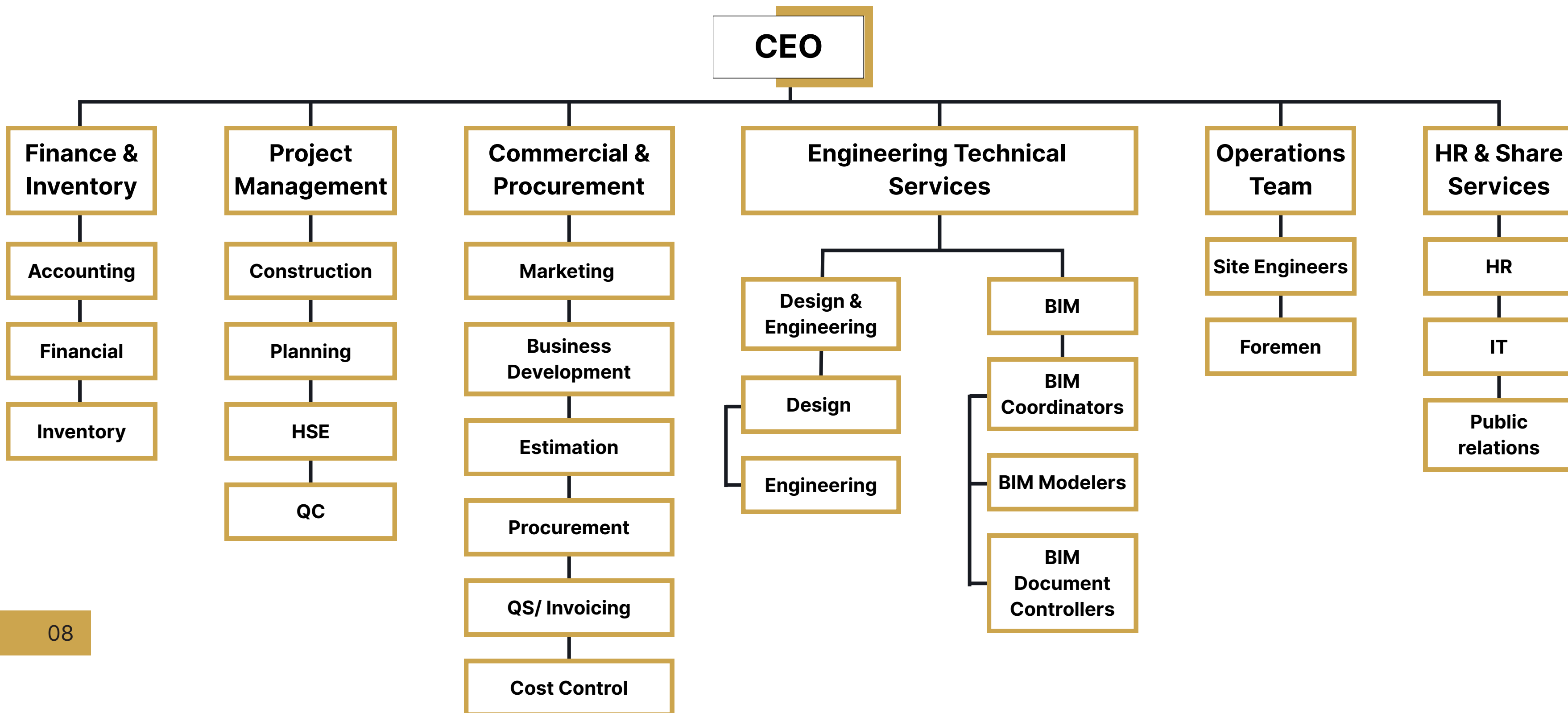
04

## Engineering Services

Our BIM and engineering technical services enhance coordination, accuracy, and efficiency by integrating intelligent 3D modeling with real-time data and expert insights. From concept to execution, we provide detailed models and support that ensure seamless project delivery.

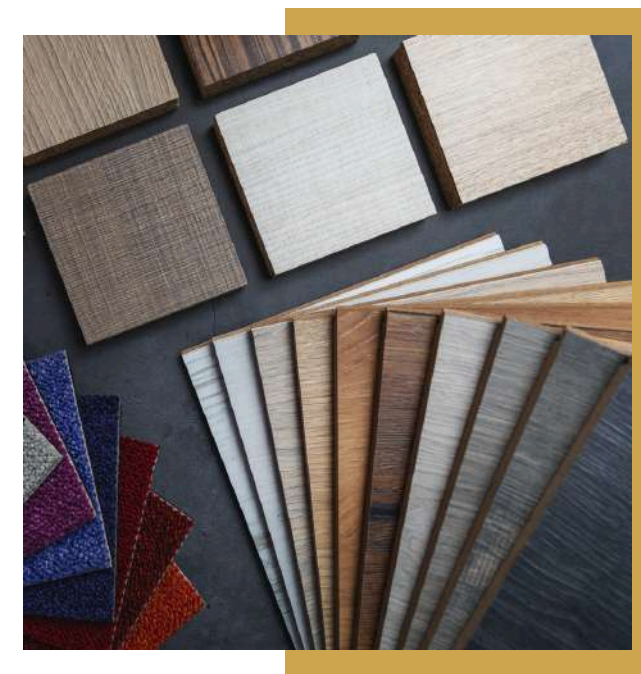
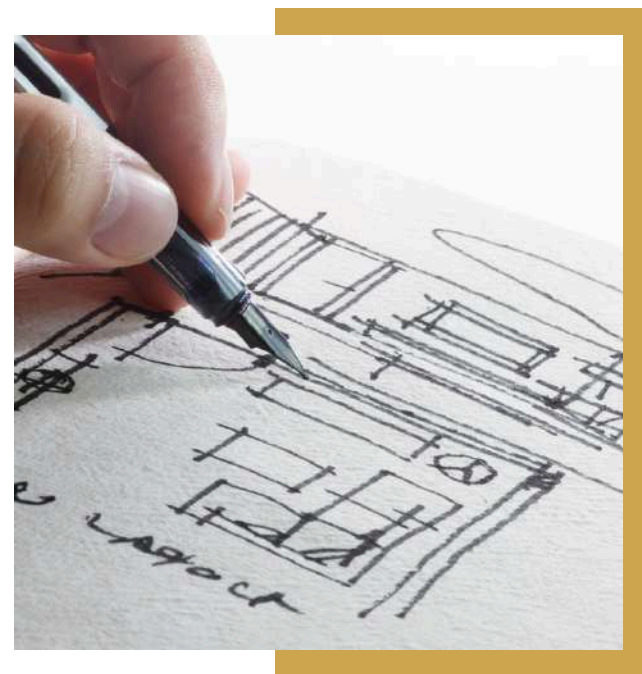


# ORGANIZATION CHART





# PROJECT PROCESS



**Concept &  
Design**

**Revisions &  
Shop Drawings**

**Tendering &  
Budgeting**

**Execution**

**Handover**



# PROJECT PROCESS



1

**Concept &  
Design**

2

**Revisions &  
Shop Drawings**

We refine the design based on your feedback and prepare detailed shop drawings for precise execution.

3

**Tendering &  
Budgeting**

4

**Execution**

5

**Handover**



# PROJECT PROCESS



**This Includes:**

- Bill of Quantities (BOQ)
- Material & Vendor Sourcing
- Pricing & Cost Breakdown
- Timeline & Payment Terms
- Scope Confirmation
- Risk & Contingency Planning
- Client Review & Approval

Detail Bill of Quantities for Proposed Factory Building					
SECTION- A EARTHWORK AND SOLING					
ITEM NO.	DESCRIPTION	QTY	UNIT	RATE	AMOUNT
A-01	Earth work excavation for all type of work in all soils like black cotton soil, clay, sand, mureom, etc but other than soft and hard rock including shoring, strutting and dewatering wherever required, scaffolding and stacking the excavated materials within 50 meters, all complete as per specifications.				
	a) From average ground level up to 1.50 M depth.	1250	Cum.	100	1,25,000
	b) Below 1.5M up to 3.0M depth	1250	Cum.	110	1,37,500
	c) Below 3.0M up to 4.5M depth	50	Cum.	140	7,000
	d) Below 4.5M up to 6.0M depth	170	Cum.	180	30,600
A-02	Filling in plinth and backfilling foundations with approved materials including spreading in 150mm layers, watering, ramming, compacting, with suitable vibro roller or earth compactor wherever applicable as decided by the Engineer, leveling, etc. complete. (Measurements for compacted volume of space occupied by filling based on certified excavation dimensions)				
	a) With selected earth available from Excavation.				
	b) Within Plant Boundary	410	Cum.	85	34,850
	b) With selected earth brought from outside having PI value less than 6	QRO	Cum.	530	
	c) With approved Sand brought from Outside.				

1

2

3

4

5

Concept &  
Design

Revisions &  
Shop Drawings

Tendering &  
Budgeting

Execution

Handover

A complete BOQ is prepared and aligned with the approved scope, cost, and timeline.



# PROJECT PROCESS



1

2

3

4

5

**Concept &  
Design**

**Revisions &  
Shop Drawings**

**Tendering &  
Budgeting**

**Execution**

**Handover**

Our team handles construction and fit-out with full on-site supervision and strict quality control.



# PROJECT PROCESS



1

2

3

4

5

**Concept &  
Design**

**Revisions &  
Shop Drawings**

**Tendering &  
Budgeting**

**Execution**

**Handover**



# Why Choose **CAPSTONE**

Capstone offers end-to-end expertise, managing every detail from design to delivery with precision, accountability, and seamless communication — giving each client one reliable point of contact throughout the process. Our work is defined by timeless quality and craftsmanship you can see, creating elegant, functional spaces that are built to perform and endure. With proven sector experience across residential, commercial, healthcare, and hospitality projects, we are especially trusted by clients living abroad to execute with confidence, clarity, and care.



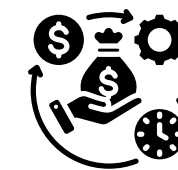
**Quality Worker**



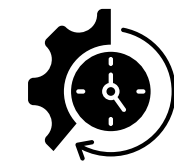
**Quality Material**



**Quality Control**



**Cost Efficient**



**Time Efficient**



**Experience**



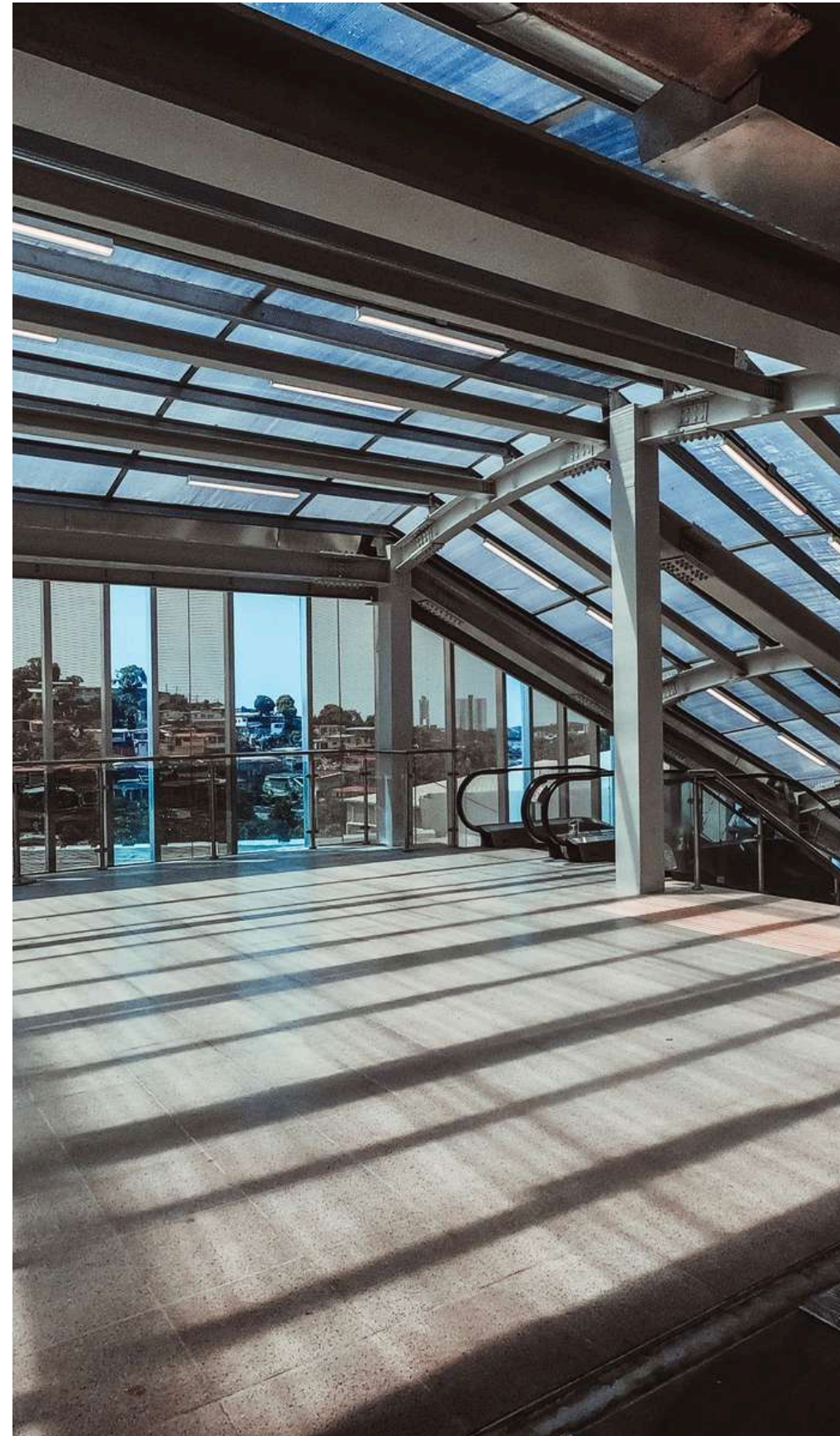
# OUR CLIENTS





# Steel Structure Portfolio

---



## About portfolio

Our steel structure services offer durable, efficient, and customizable solutions for industrial frames, mezzanines, and architectural steelwork, executed with precision and engineering excellence.



# STEEL STRUCTURE



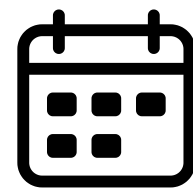
22M EGP



8 mon.



Completed



2022

## NOVOMET Office Building & Workshop Project

**Role:** Main Contractor

**Scope:** Steel Structure

Interior & Exterior Finishing Works

MEP

**Location:** Borg El Arab Free Zone

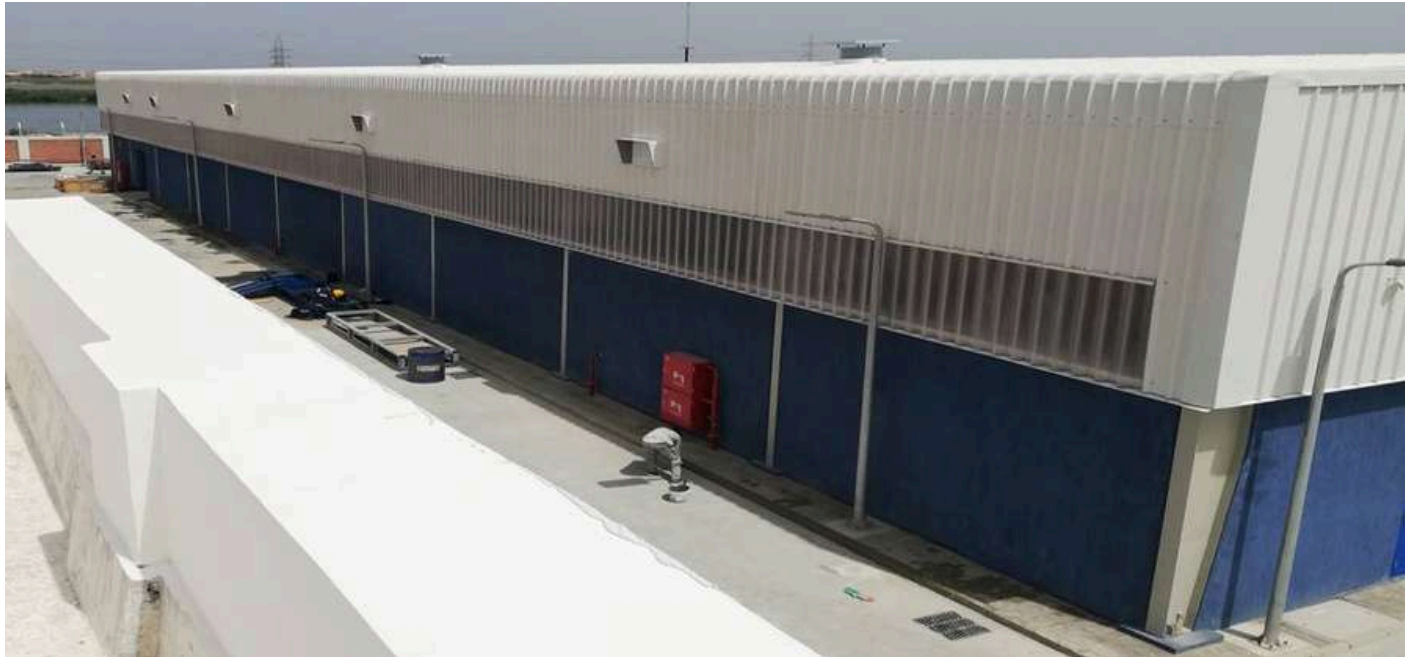
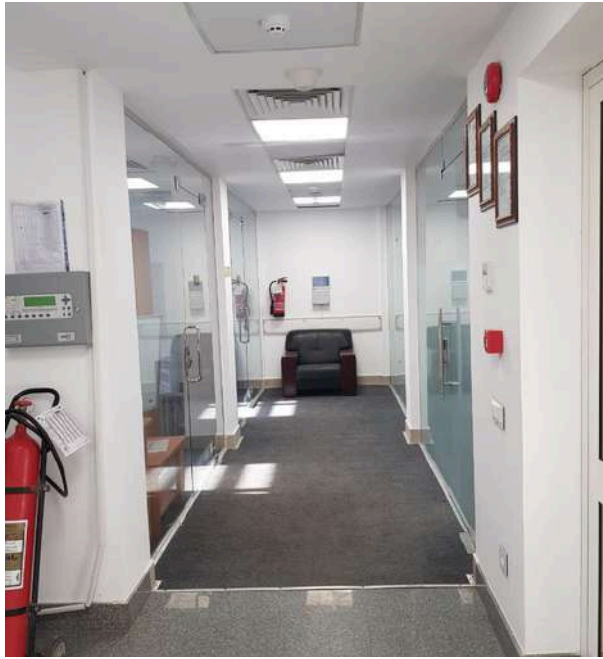




Plot as received







Cairo, March 31<sup>st</sup>, 2022

To: Eng. Mohamed Mohamed Hashim

Dear Sir,

On Behalf of Novomet, I am writing this letter to convey appreciation for the completion of constructing Novomet office building and work shop at the free zone in Egypt, including the finishing work for both.

The project has been completed within the deadline which was awarded to you with High quality and as per standard desired by Novomet.

I appreciate you and your firm Capstone for such an excellent work on Novomet project and will be more than willing to share responsibility with your firm in the coming future.

We are looking forward to further work relation between two sides

Thanks and best regards,

*Wael Sayed*  
Wael Sayed  
CEO & Country Manager  
Novomet NAP Petroleum Services E-Z - SAE

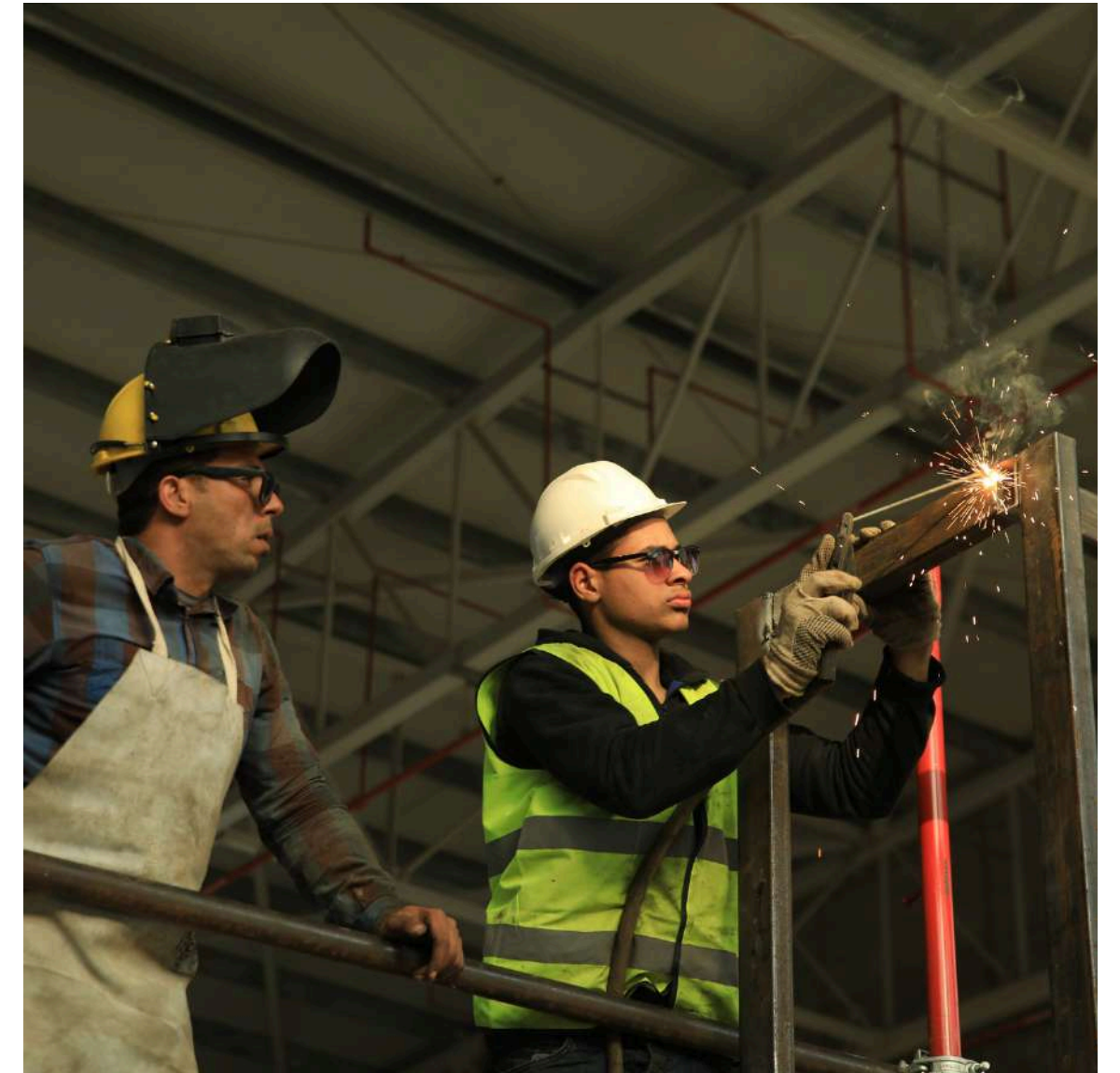


Novomet NAP Petroleum Services Address: 2, Menouly Elhazawy Street, Sheraton Buildings, Helwan, Cairo, Egypt  
Phone: +2 (02) 2260 081/084 Fax: +2 (02) 2260 0882 Email: info.egypt@novometgroup.com Website: www.novometgroup.com



# Construction Portfolio

---



## About portfolio

Our construction service delivers high-quality builds with disciplined project management, ensuring on-time, on-budget execution across residential, commercial, and specialized sectors.



# CONSTRUCTION Z MALL



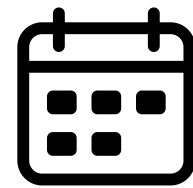
16M EGP



18 mon.



Completed



2022

## Z MALL Dahshour Axis Egypt

**Role:** Sub-Contractor

**Scope:** Construction

**Location:** Sheikh Zayed

**Client:** Kiran Development









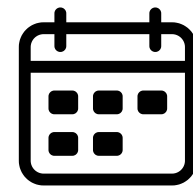
# CONSTRUCTION EL THAWRA AL KHADRA



24 mon.



Completed



2023

## El Thawra Al Khadra Project

**Role:** Sub-Contractor

**Scope:** Construction  
Block Work

**Location:** Sheikh Zayed









# CONSTRUCTION

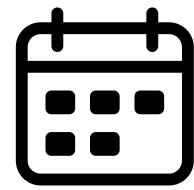
## BEIT EL WATAN VILLAS



9 mon.



Completed



2021-2023

### Beit El Watan Villas

**Role:** Main-Contractor

**Scope:** Construction  
Block Work

**Location:** Beit El Watan, New Cairo













# Fit-Out Portfolio

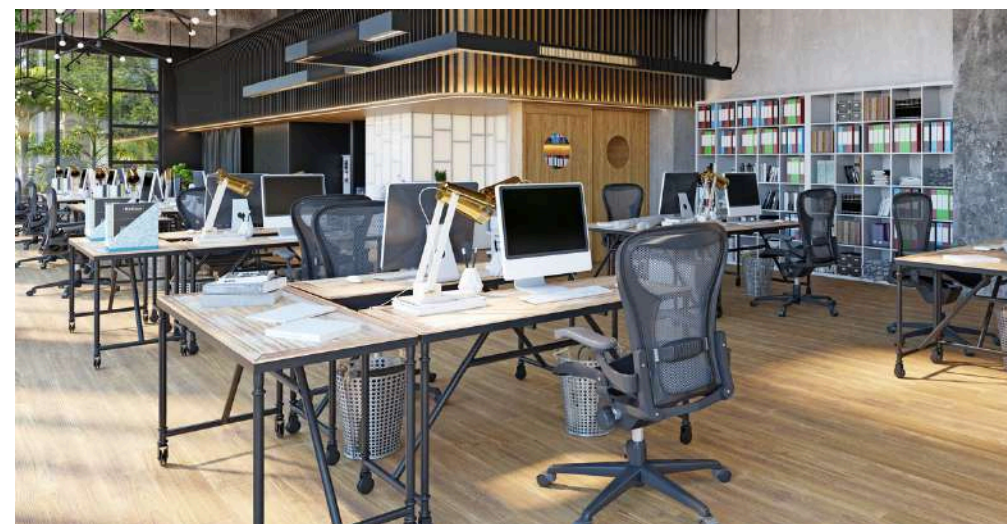
---



Residential Fit-Out



Healthcare Fit-Out



Administrative Fit-Out



Commercial Fit-Out

## About portfolio

We provide turnkey fit-out solutions tailored to residential, commercial, retail, healthcare, and hospitality spaces — handling every detail from partitions and finishes to MEP works for fully functional, design-aligned environments.





# Fit-Out **COMMERCIAL**

Our commercial fit-out services deliver fully functional, brand-aligned spaces through integrated design, interior finishing, and electromechanical works. From concept to completion, we handle layout planning, MEP systems, and detailed execution to ensure efficient, high-quality environments ready for business.



# FIT-OUT: COMMERCIAL GOLD'S GYM



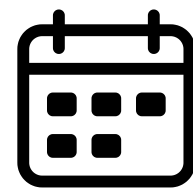
75M EGP



8 mon.



In Progress



2025

## Gold Gym Layan Branch Project

**Role:** Main Contractor

**Scope:** Design Development  
Interior & Exterior Finishing Works  
MEP

**Location:** Layan, New Cairo

**Client:** Manazel

COMMERCIAL



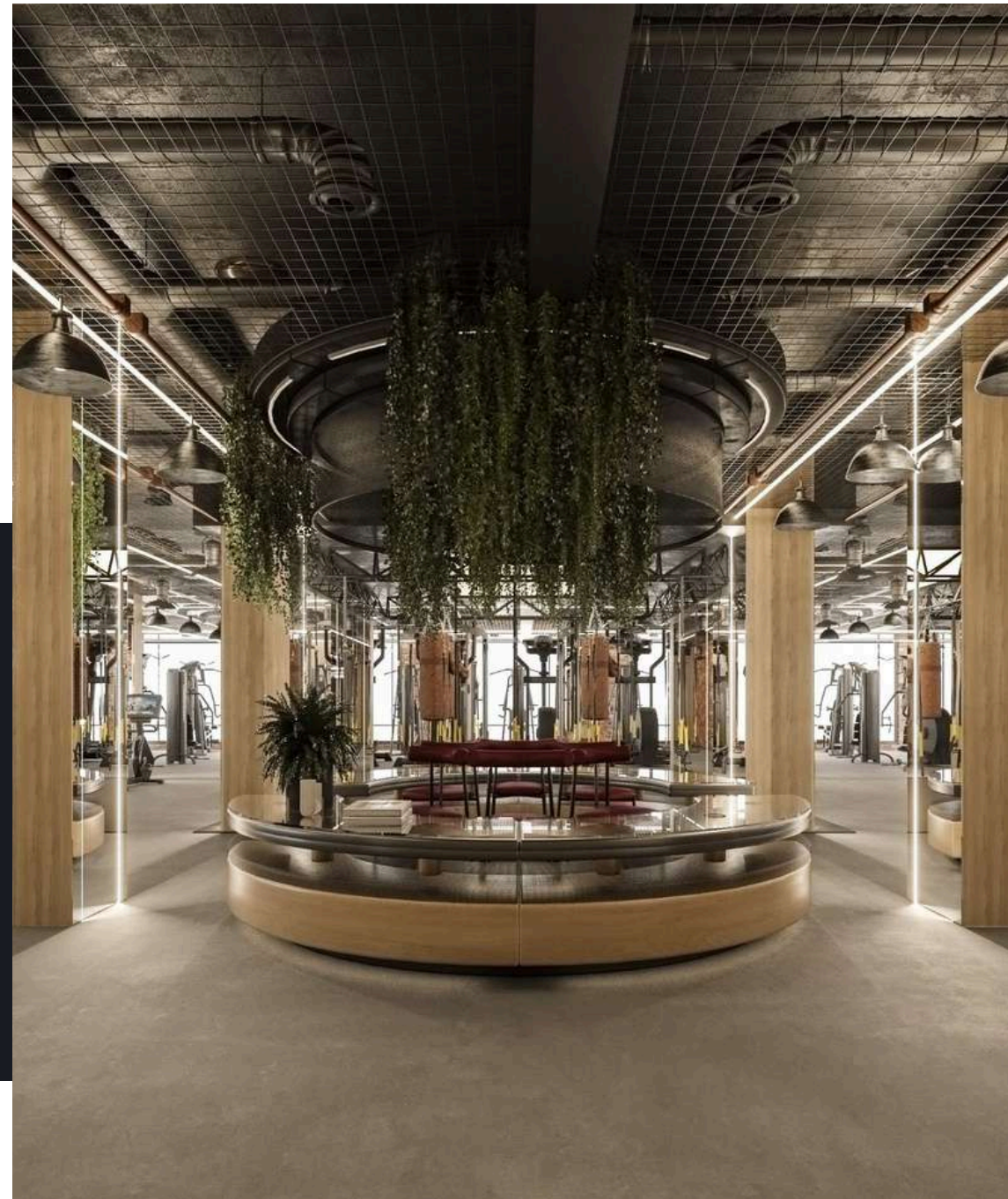
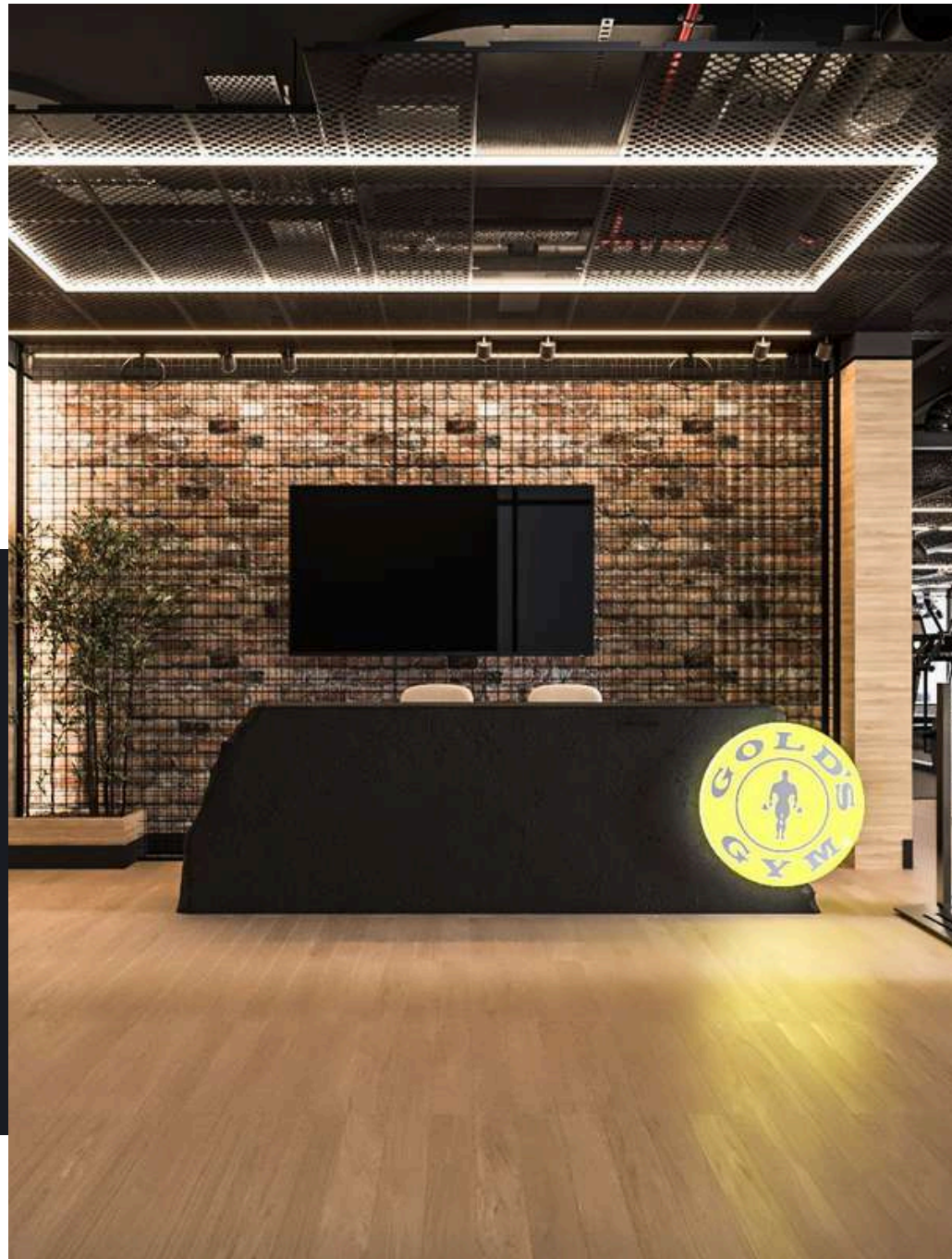


# EXTERIOR DESIGN



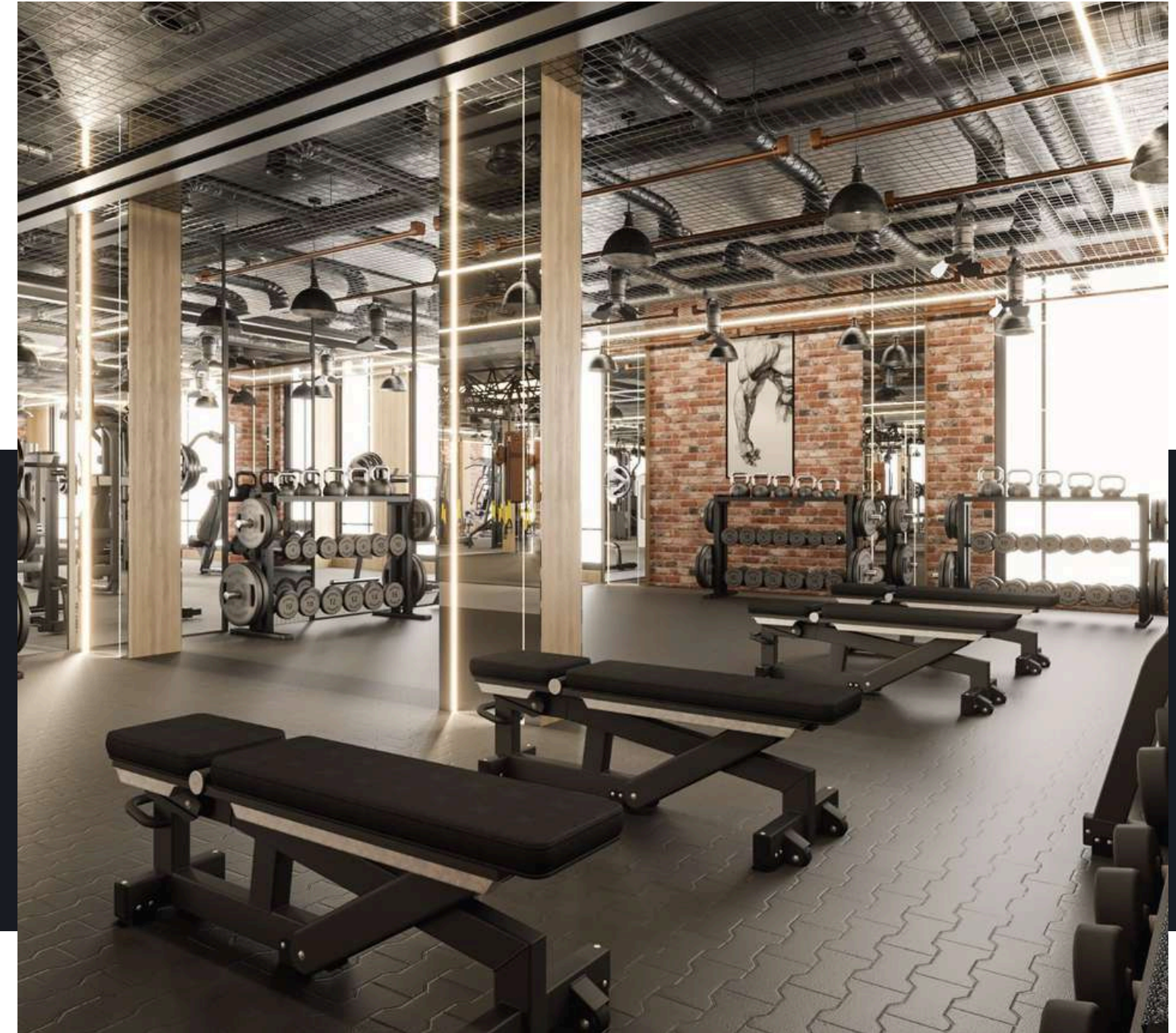
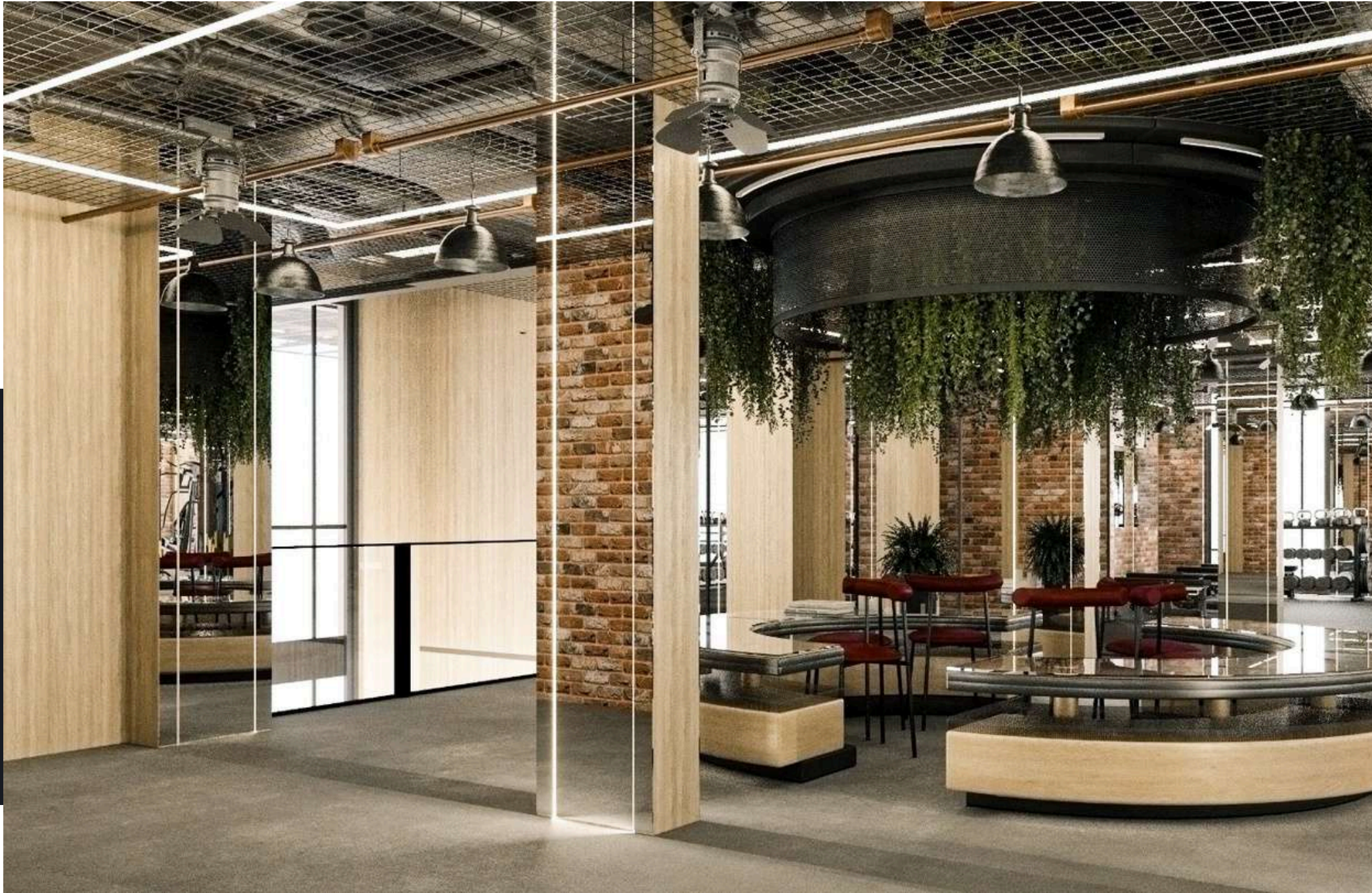


# INTERIOR DESIGN



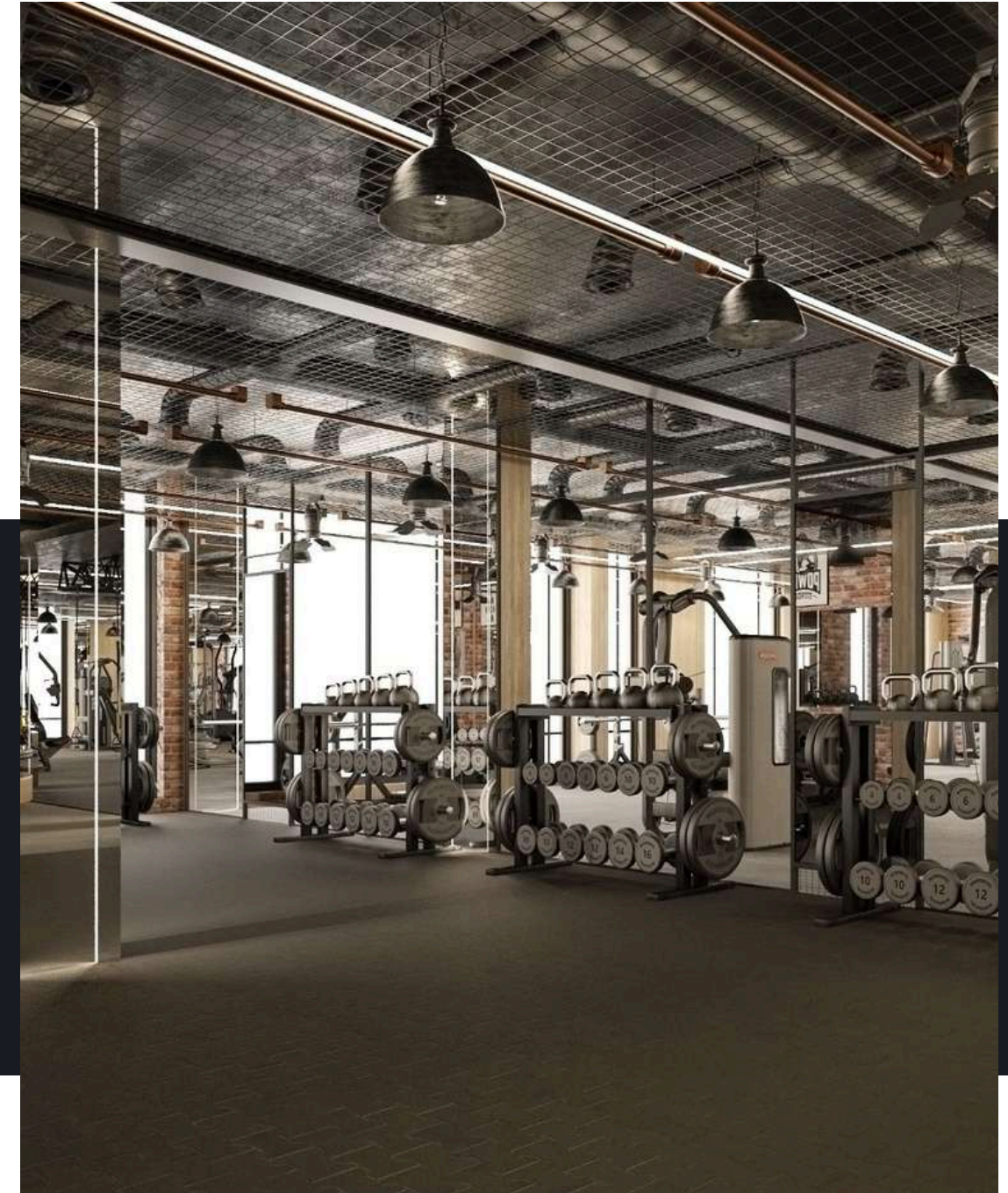
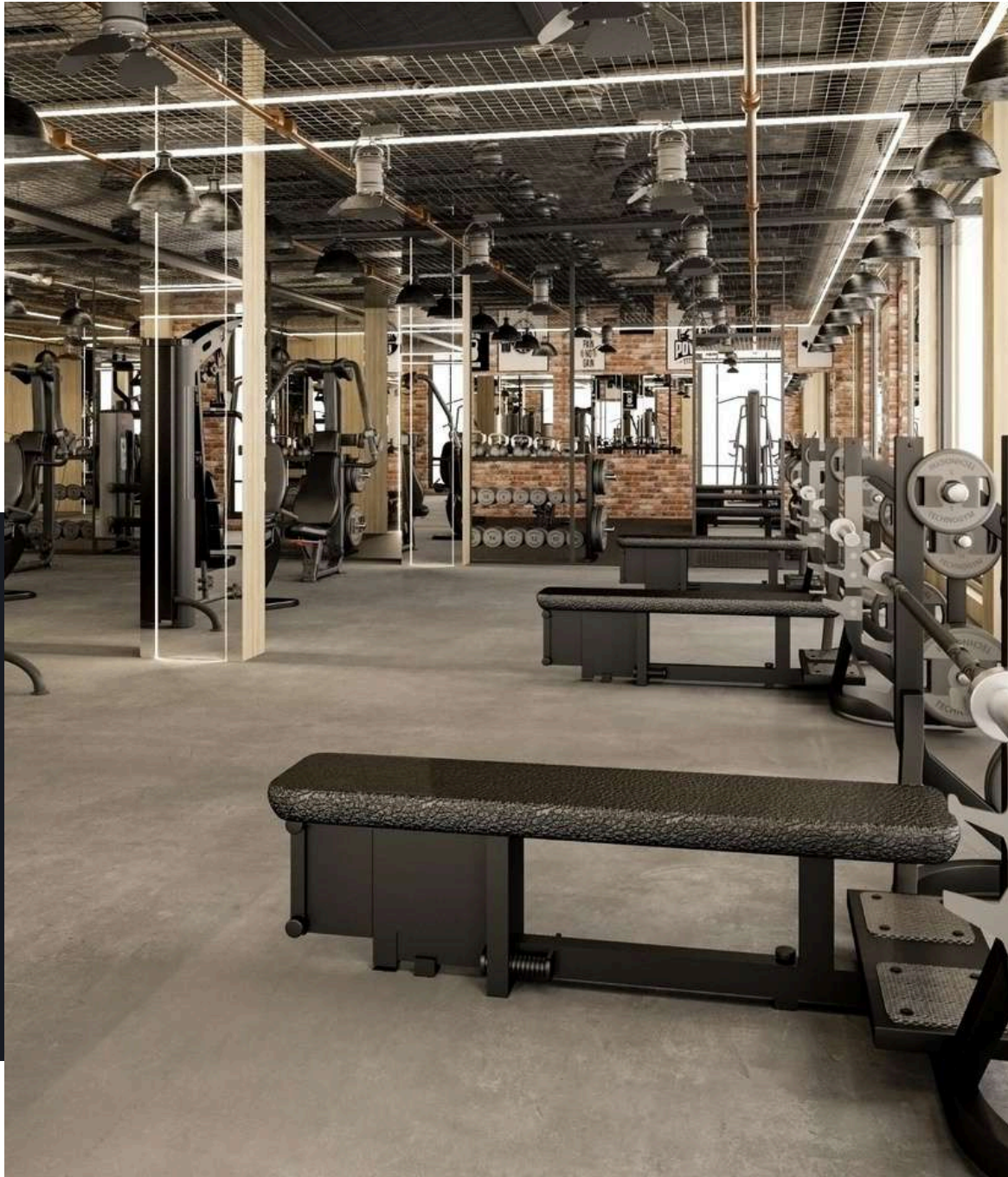


# INTERIOR DESIGN





# INTERIOR DESIGN





# FIT-OUT: COMMERCIAL CHUCKY E. CHEESE



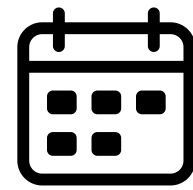
1.5M USD



6 mon.



Completed



2024

## Chucky E. Cheese

**Role:** Main Contractor

**Scope:** Design Development  
Construction  
Interior & Exterior Finishing Works  
Fully Furnished

**Location:** Royal Park, Sheikh Zayed

**Client:** Chucky E. Cheese

COMMERCIAL

35



**CHUCK E.  
CHEESE®**









# ELECTRO-MECHANICAL WORKS

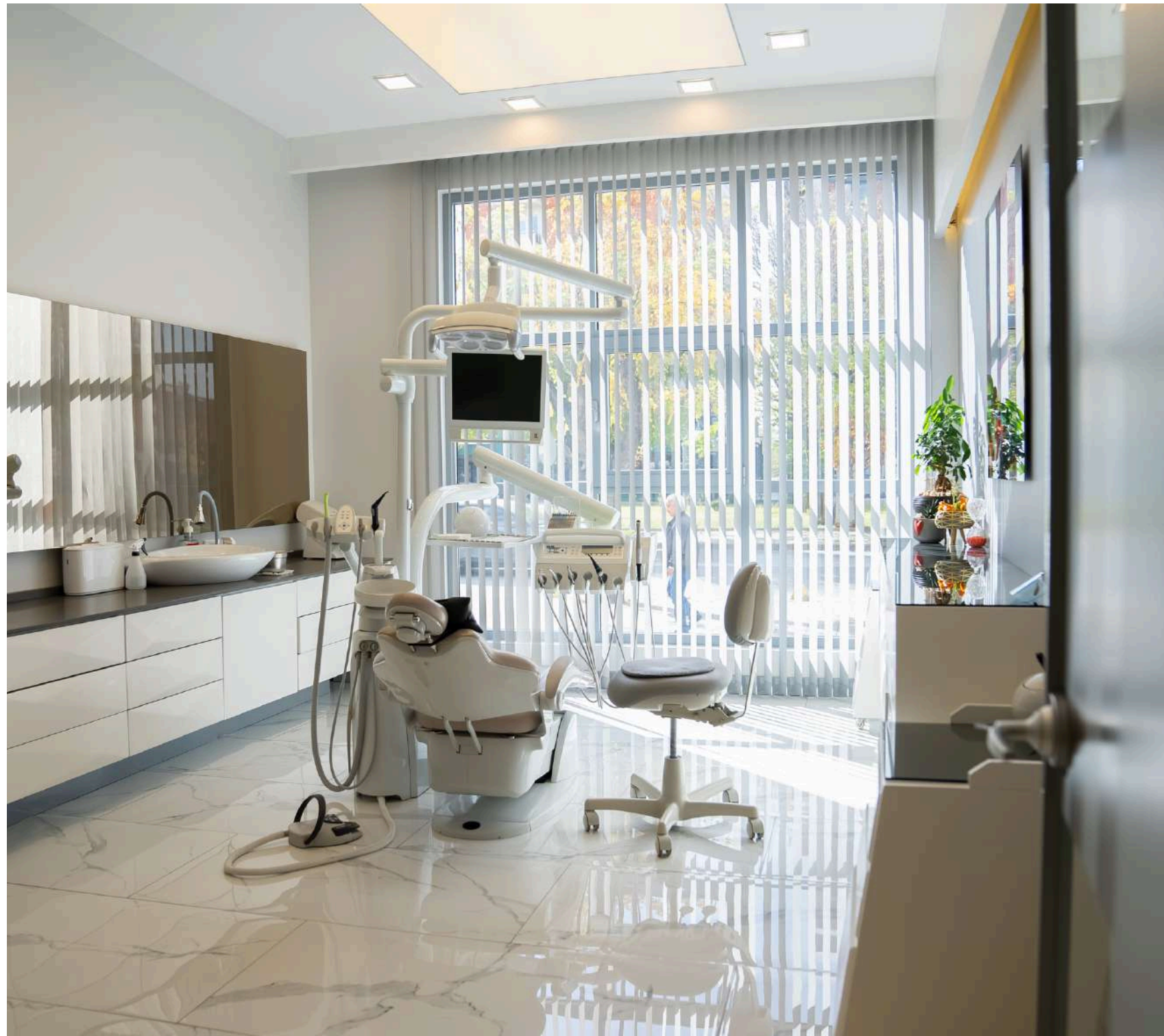




# OPENING CEREMONY







# Fit-Out **MEDICAL**

Our medical fit-out services are designed to meet the highest standards of functionality, hygiene, and regulatory compliance. With deep knowledge of medical equipment, spatial planning, and specialized MEP systems, we ensure every unit—from **dental chairs to diagnostic machines**—is precisely installed, coordinated, and integrated into the space for seamless operation.



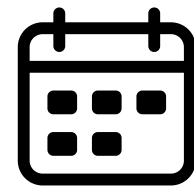
# FIT-OUT: MEDICAL BEAUTY CENTER



8M EGP



in Progress



2025

## Medical Clinic

**Role:** Main Contractor

**Scope:** Concept Design  
Design Development  
Fit-Out

**Location:** New Cairo, Cairo

**Client:** Private Client

MEDICAL

40



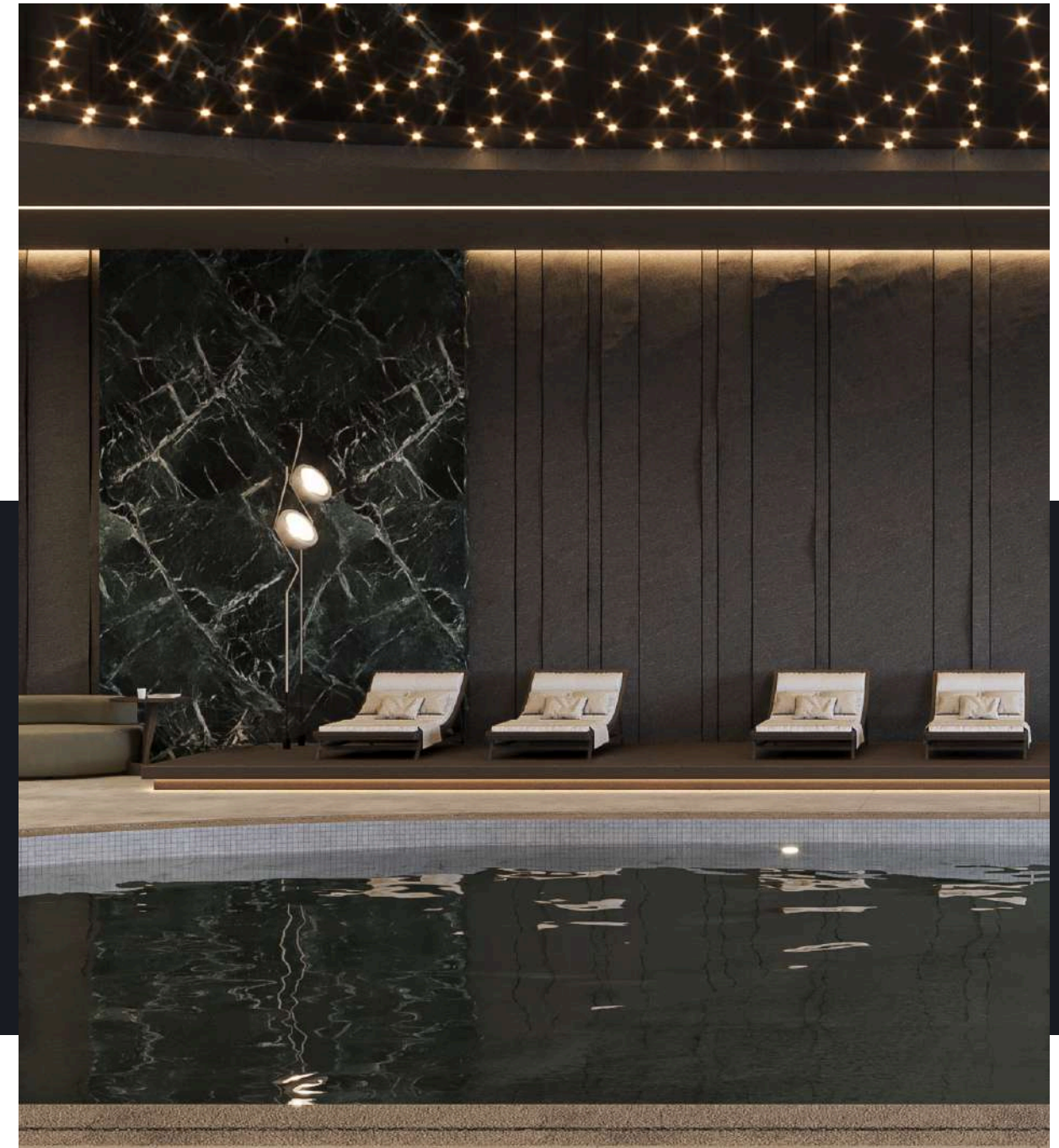


# RECEPTION





# SWIMMING POOL





# WAITING AREA





# MASSAGE ROOM





# SHOWER & CHANGING ROOMS





# JACCUZI





# SAUNA, STEAM, TROPICAL SHOWER



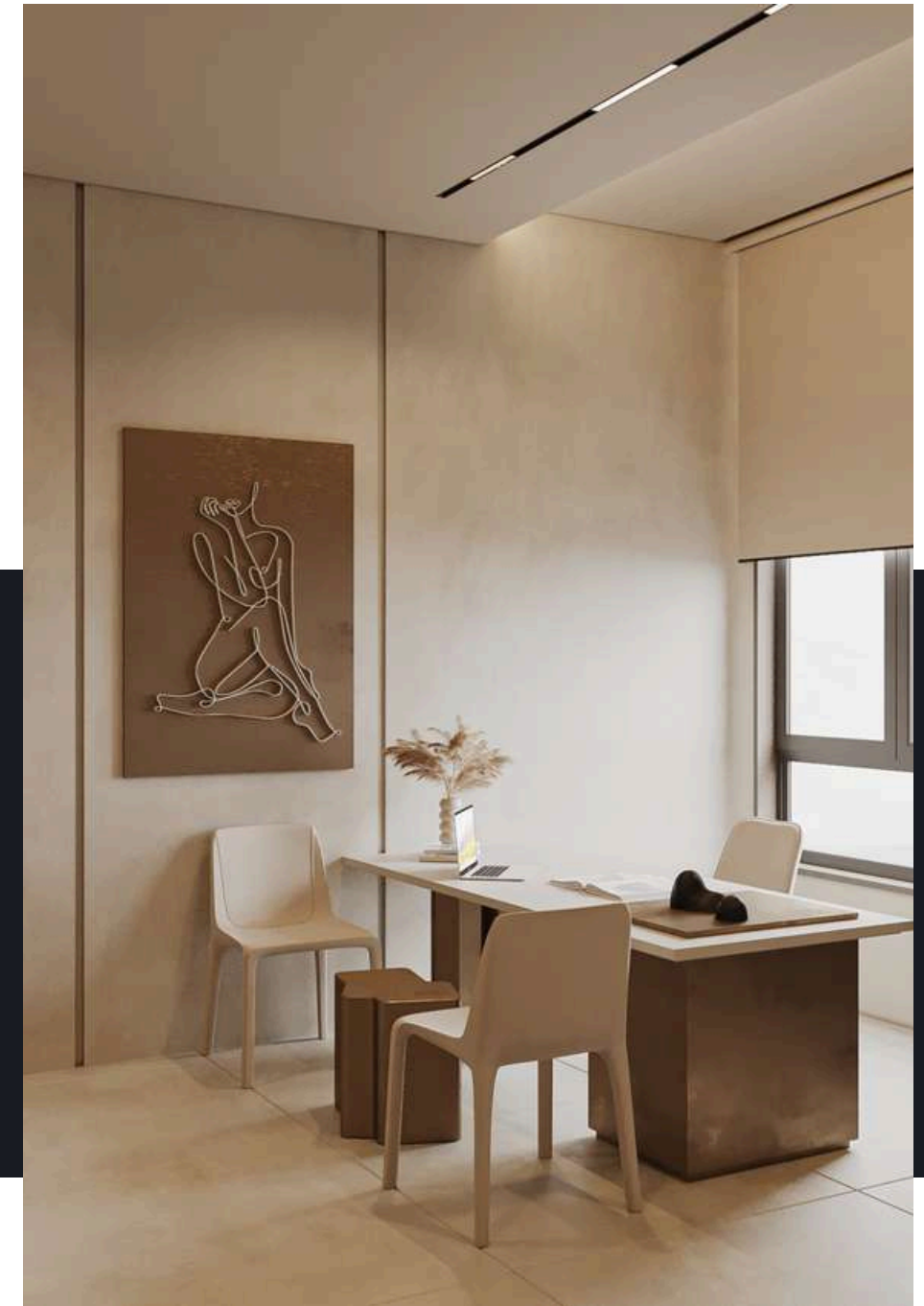


# CLINIC ROOMS





# CLINIC ROOMS





# FIT-OUT: MEDICAL CLINIC



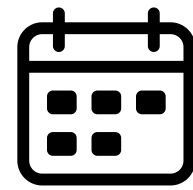
5.5M EGP



3 mon.



Completed



2024

## Medical Clinic

**Role:** Main Contractor

**Scope:** Design Development  
Fit-Out  
Fully Furnished

**Location:** El Maadi, Cairo

**Client:** Private Client

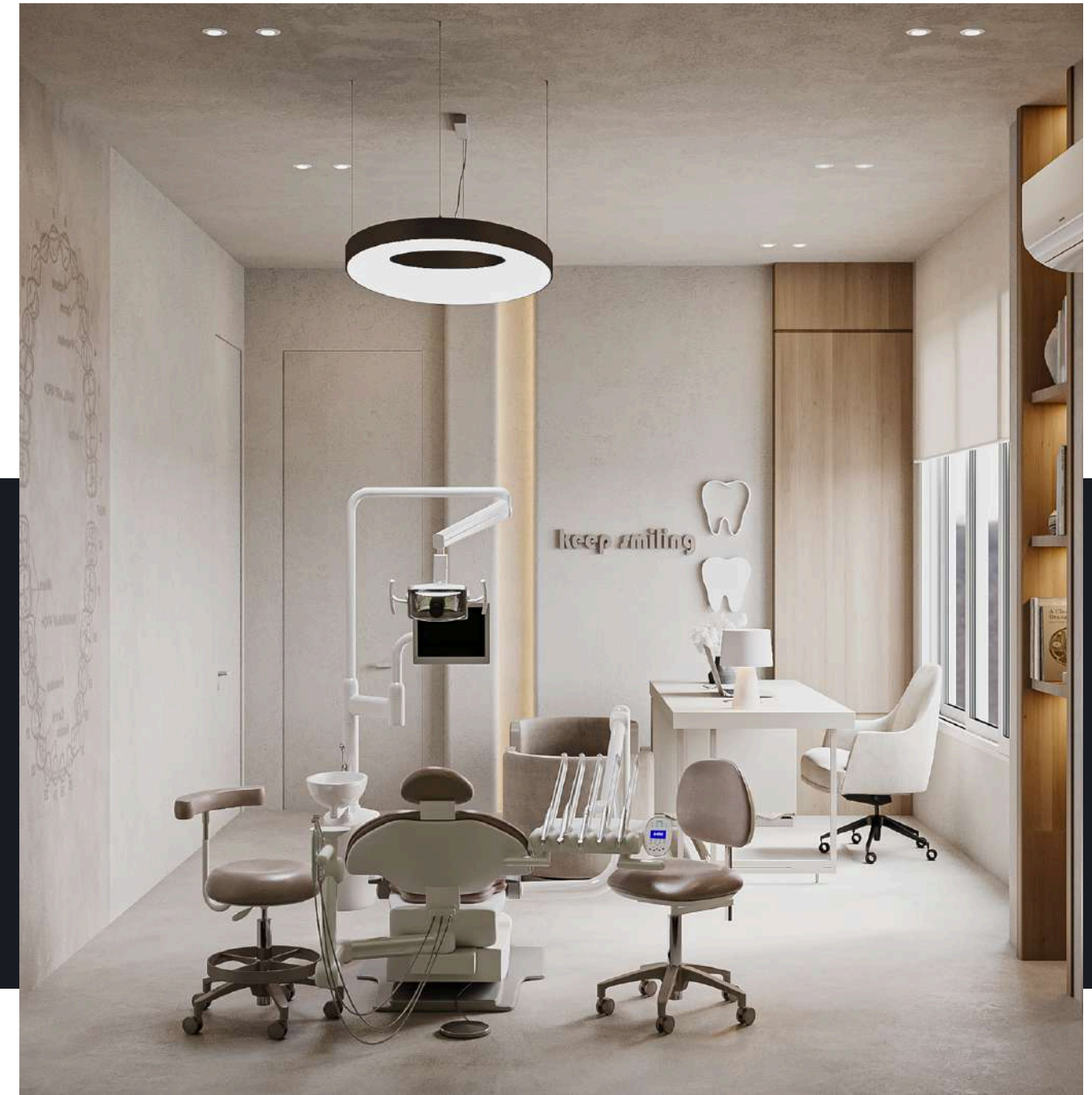
MEDICAL

50



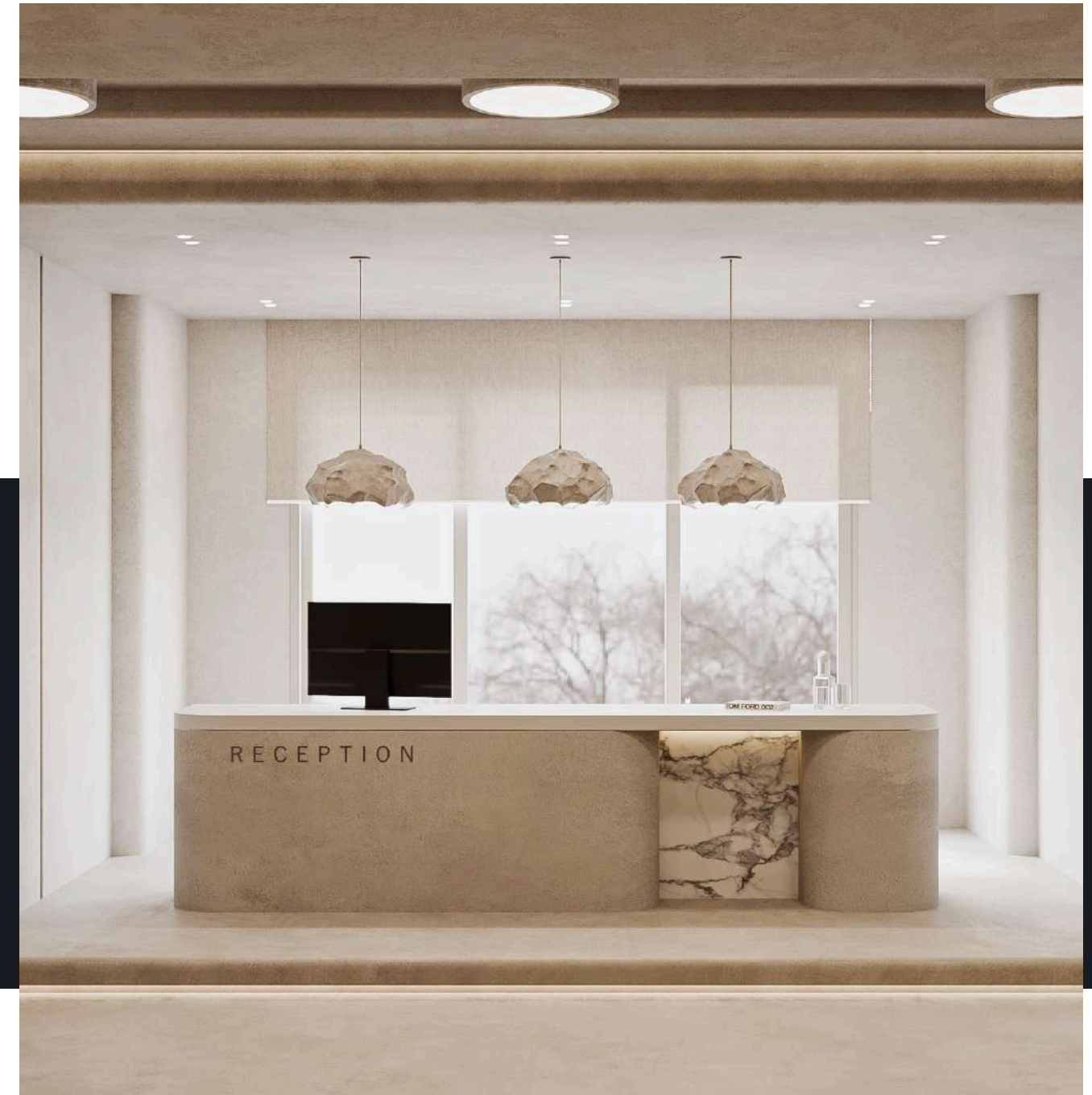


# DENTAL CLINICS





# RECEPTION





# RECEPTION







# Fit-Out **ADMINISTRATIVE**

Our administrative fit-out services create efficient, comfortable work environments that balance functionality and design. From space planning to MEP works and finishing, we deliver fully equipped offices tailored to operational needs and brand identity.



# FIT-OUT: ADMINISTRATIVE KIRAN DEVELOPMENT



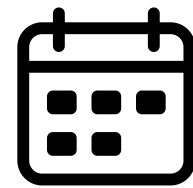
18.2M EGP



9 mon.



Completed



2023

## Kiran Developments Office

**Role:** Main Contractor

**Scope:** Design Development  
Fit-Out

Fully Furnished

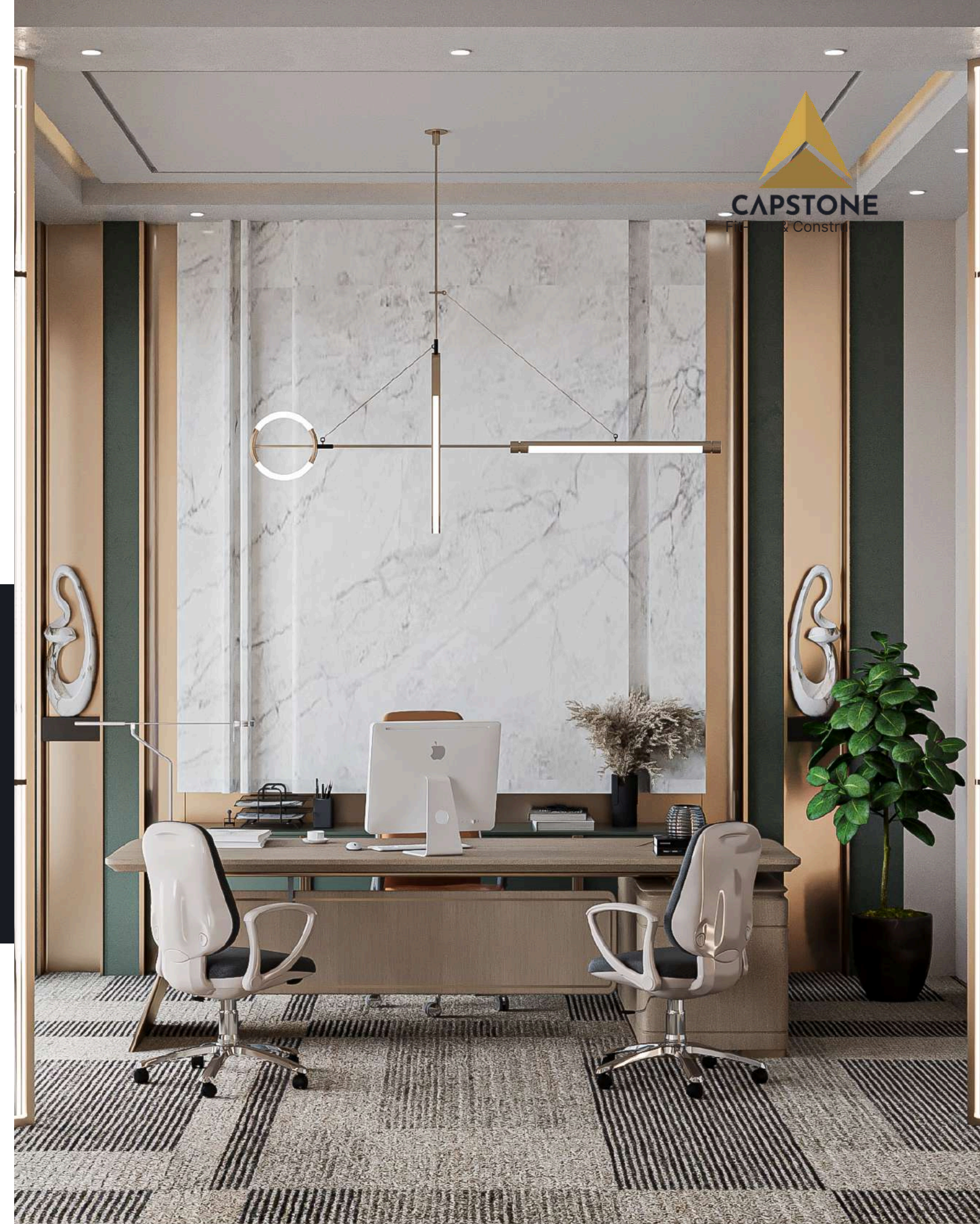
**Location:** Avenue Office Zayed

**Client:** Kiran Developments

Administrative

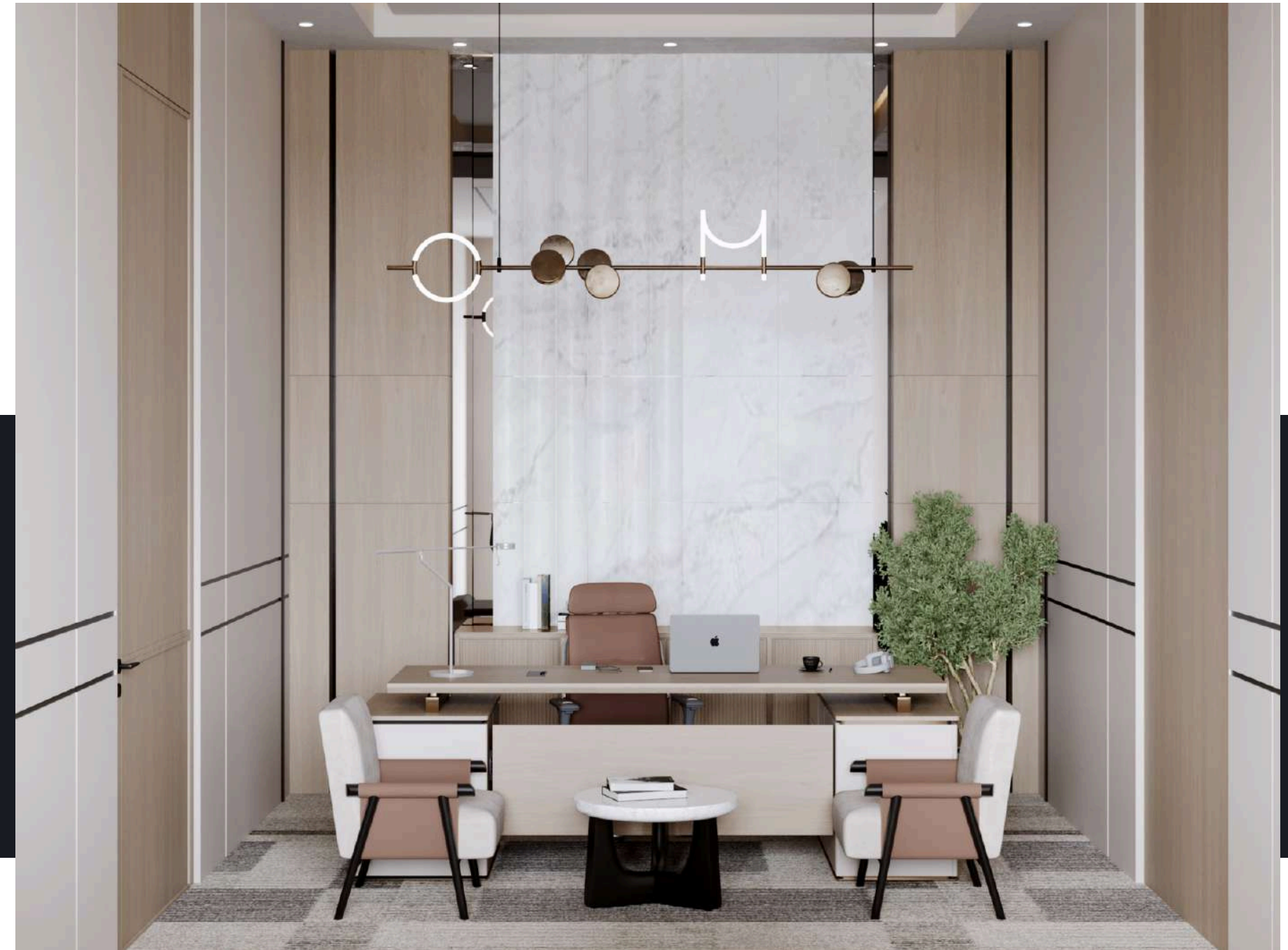
55

KIRAN  
DEVELOPMENT





# OFFICES





# OFFICES





# INTERIOR DESIGN



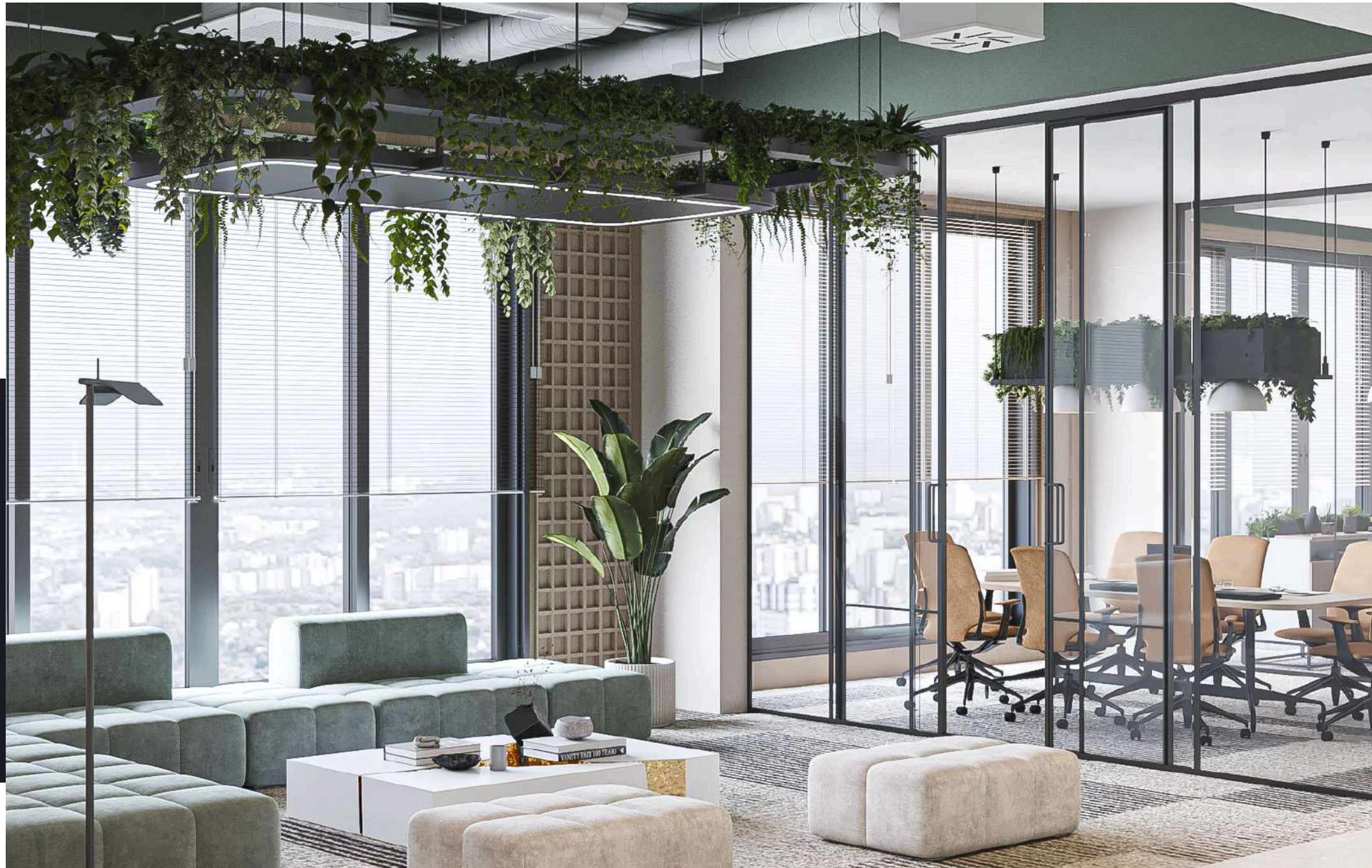


# INTERIOR DESIGN





# INTERIOR DESIGN







# Fit-Out **RESIDENTIAL**

Our medical fit-out services are designed to meet the highest standards of functionality, hygiene, and regulatory compliance. With deep knowledge of medical equipment, spatial planning, and specialized MEP systems, we ensure every unit—from **dental chairs** to **diagnostic machines**—is precisely installed, coordinated, and integrated into the space for seamless operation.



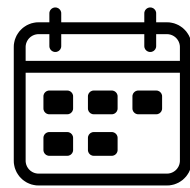
# FIT-OUT: RESIDENTIAL SODIC COMPOUND VILLA



7.6M EGP



Completed



2025

## Sodic Compound Villa

**Role:** Design & Contracting

**Scope:** Design  
Fit-Out

Fully Furnished

**Location:** Sodic Compound

**Client:** Private Client

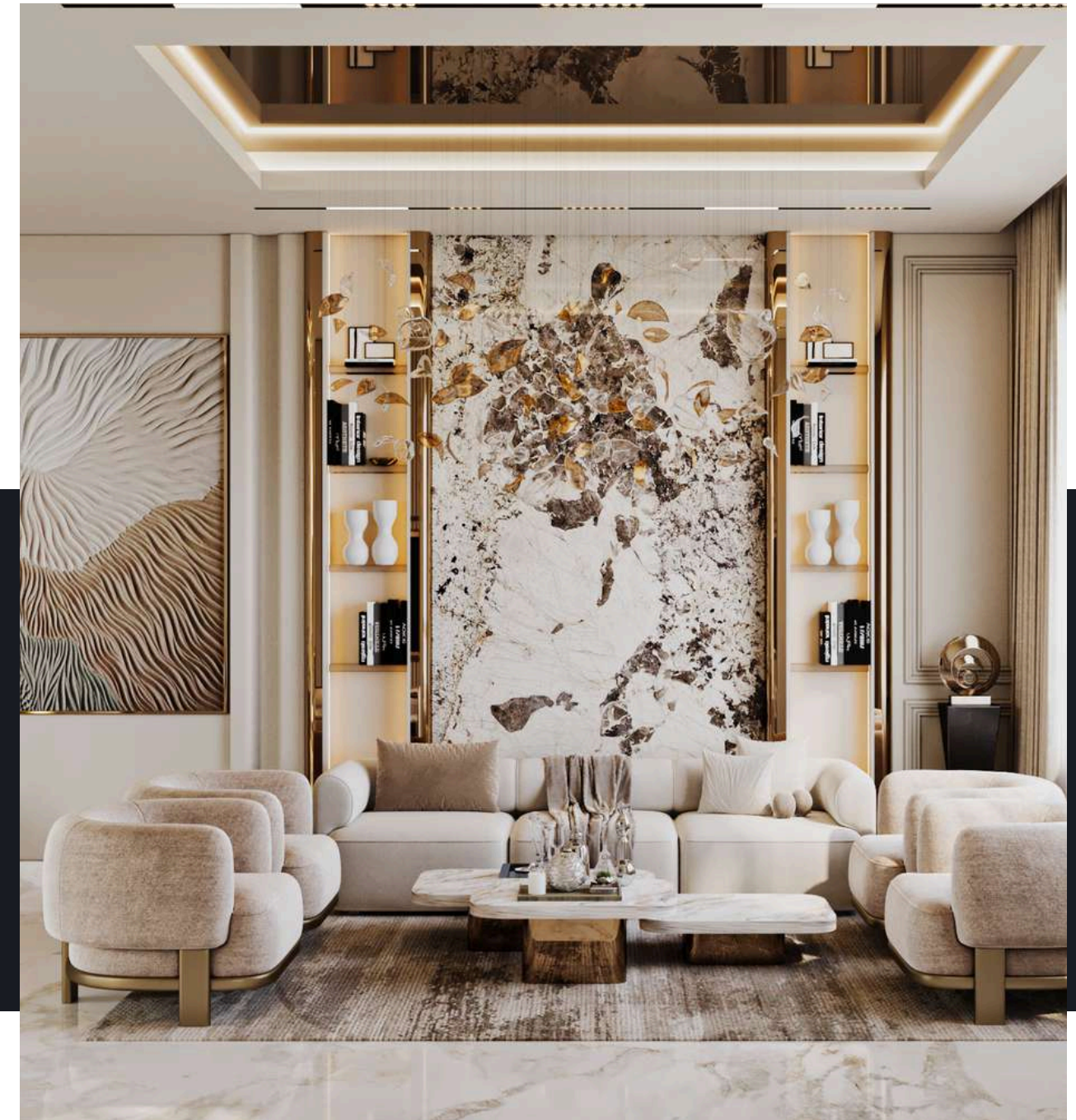
Residential

62



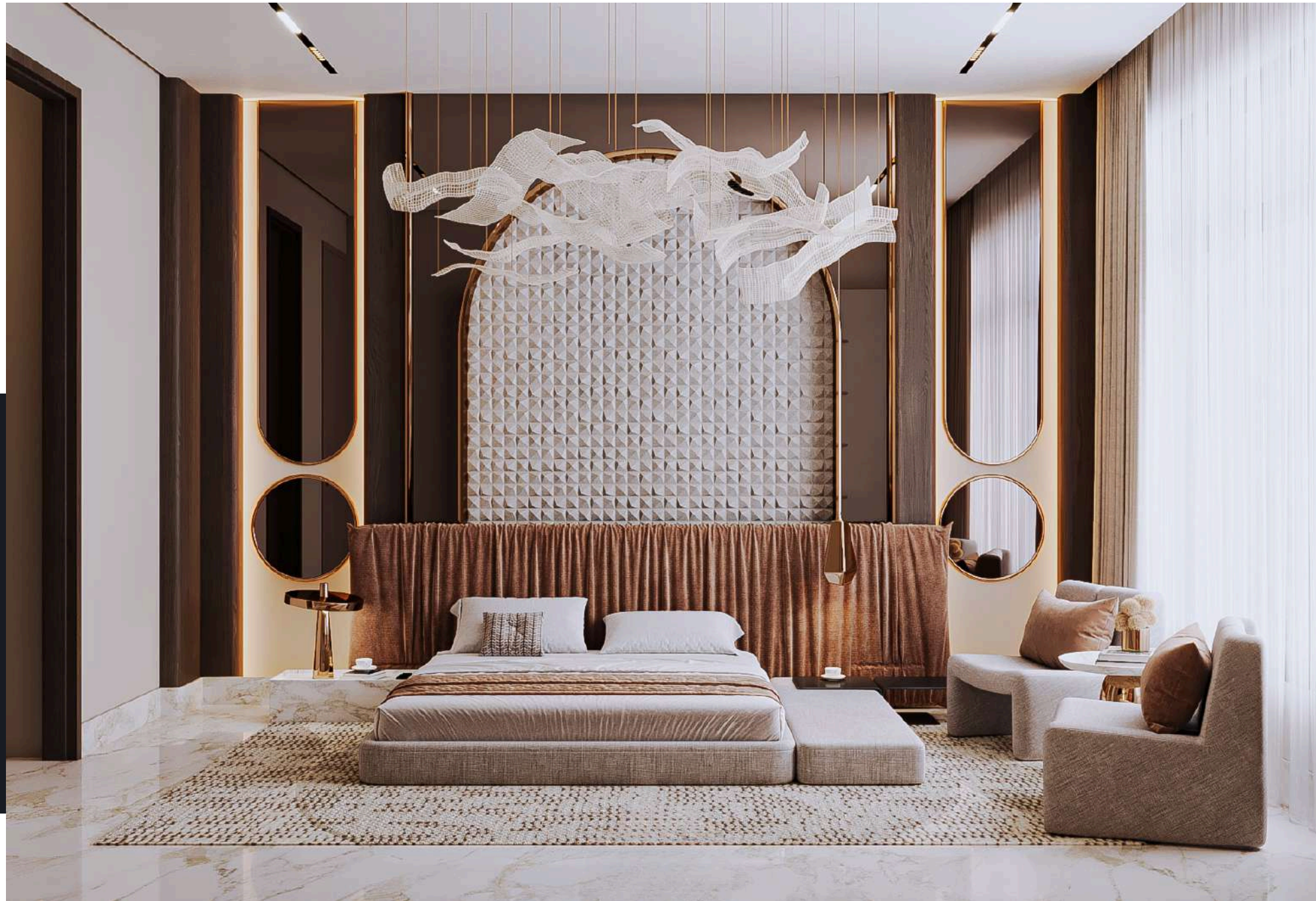


# RECEPTION & DINING



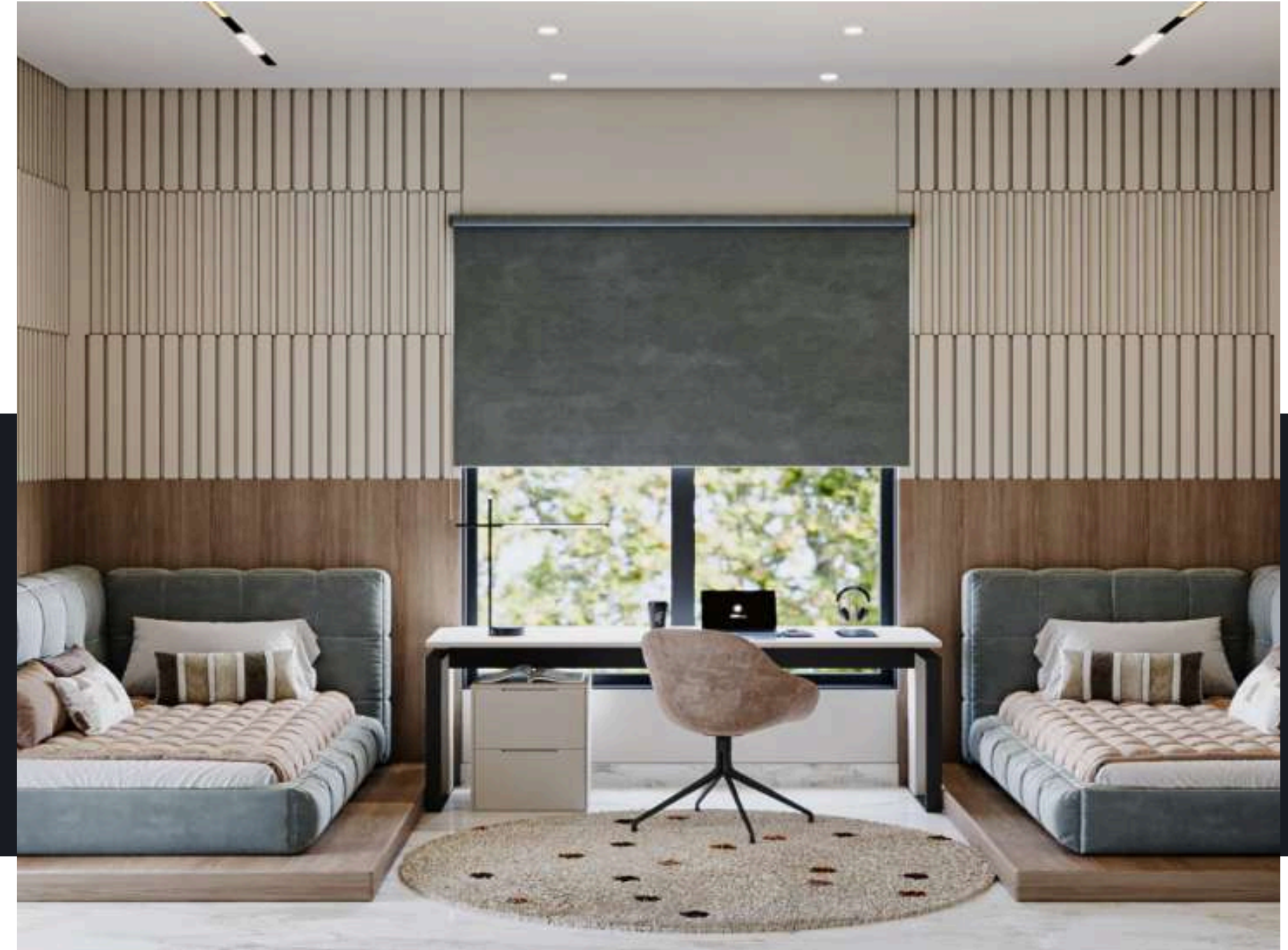


# MASTER BEDROOM





# KIDS BEDROOM





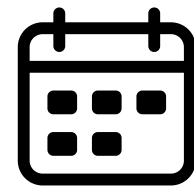
# FIT-OUT: RESIDENTIAL MOSTAKBAL CITY



3.2M EGP



Completed



2025

## Mostakbal City Apartment

**Role:** Design & Contracting

**Scope:** Design  
Fit-Out  
Fully Furnished

**Location:** Mostakbal City

**Client:** Private Client

Residential

66





# ENSUITE MASTER BEDROOM



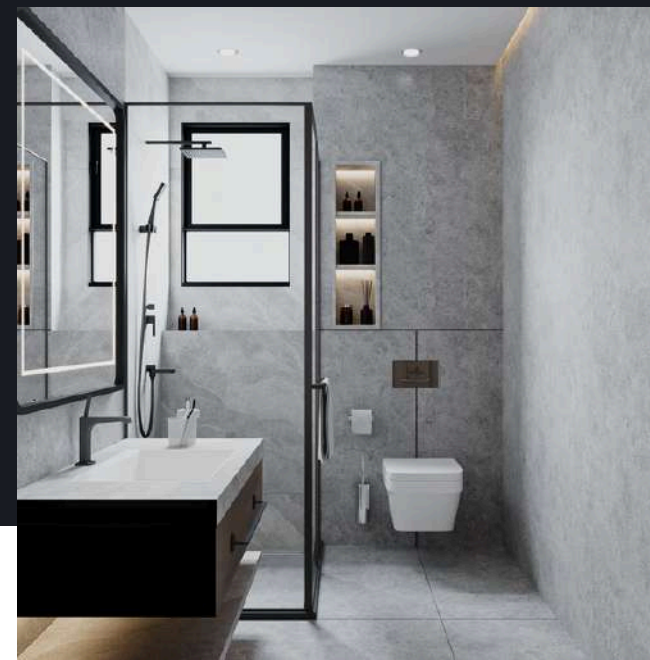


# ENSUITE GIRL'S BEDROOM





# ENSUITE BOYS' BEDROOM





# LIVING ROOM





# RECEPTION





# KITCHEN & DINING





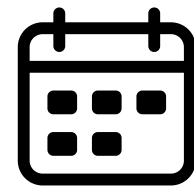
# FIT-OUT: RESIDENTIAL HYR12 COMPOUND VILLA



6M EGP



Completed



2025

## **HYR12 Compound Villa**

**Role:** Design & Contracting

**Scope:** Design  
Fit-Out

Fully Furnished

**Location:** HYR12 Compound

**Client:** Private Client

Residential

73





# RECEPTION



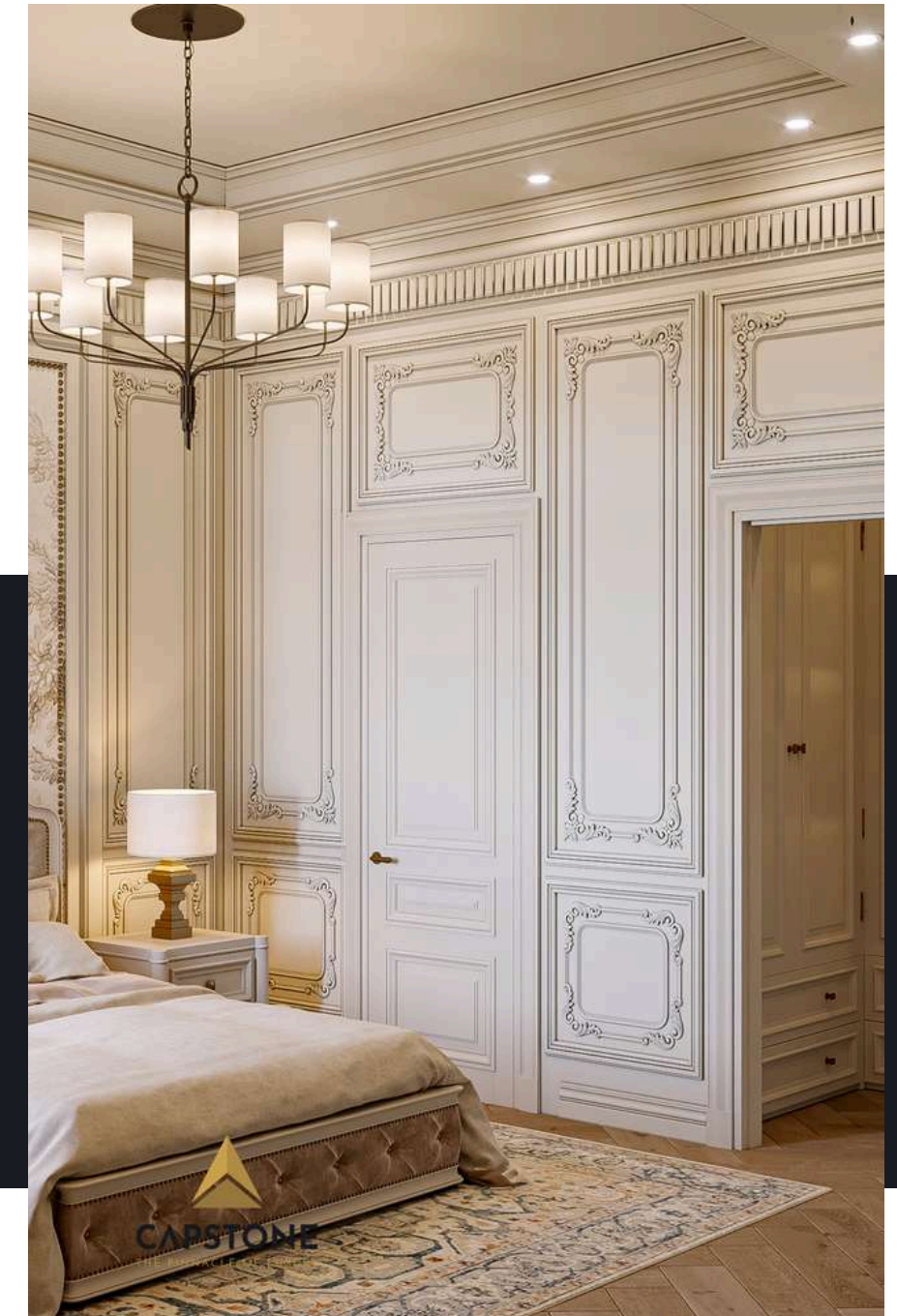


# DINING



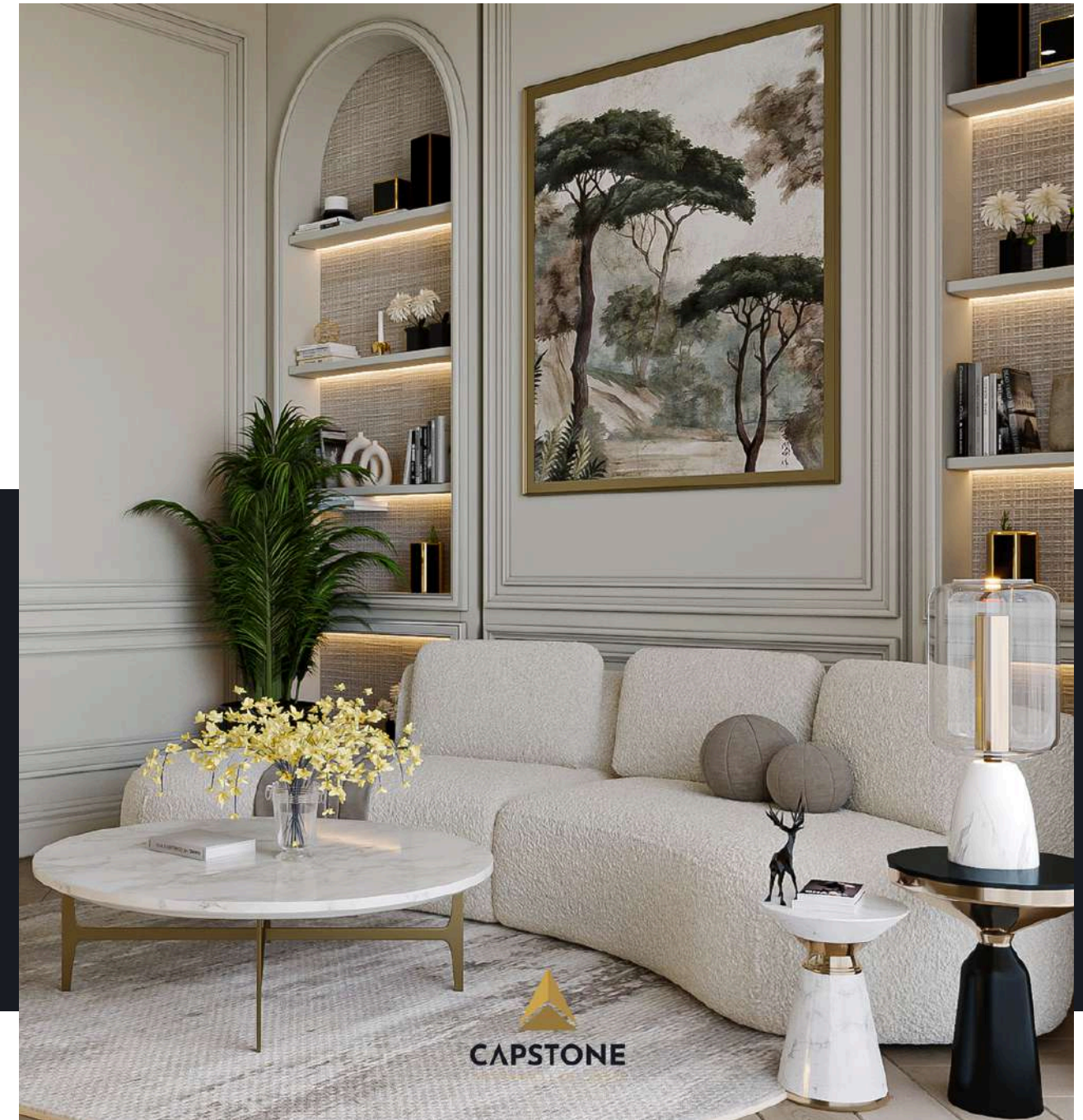


# MASTER BEDROOM





# KIDS & LIVING ROOMS





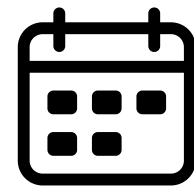
# FIT-OUT: RESIDENTIAL HYDE PARK VILLA



3.2M EGP



Completed



2024

## Hyde Park Villa

**Role:** Design & Contracting

**Scope:** Design  
Fit-Out  
Fully Furnished

**Location:** Hyde Park Compound

**Client:** Private Client

Residential

78





# LIVING & DINING





# TOILETS INTERIOR





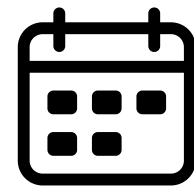
# FIT-OUT: RESIDENTIAL HYDE PARK VILLA



2.8M EGP



Completed



2024

## Hyde Park Villa

**Role:** Design & Contracting

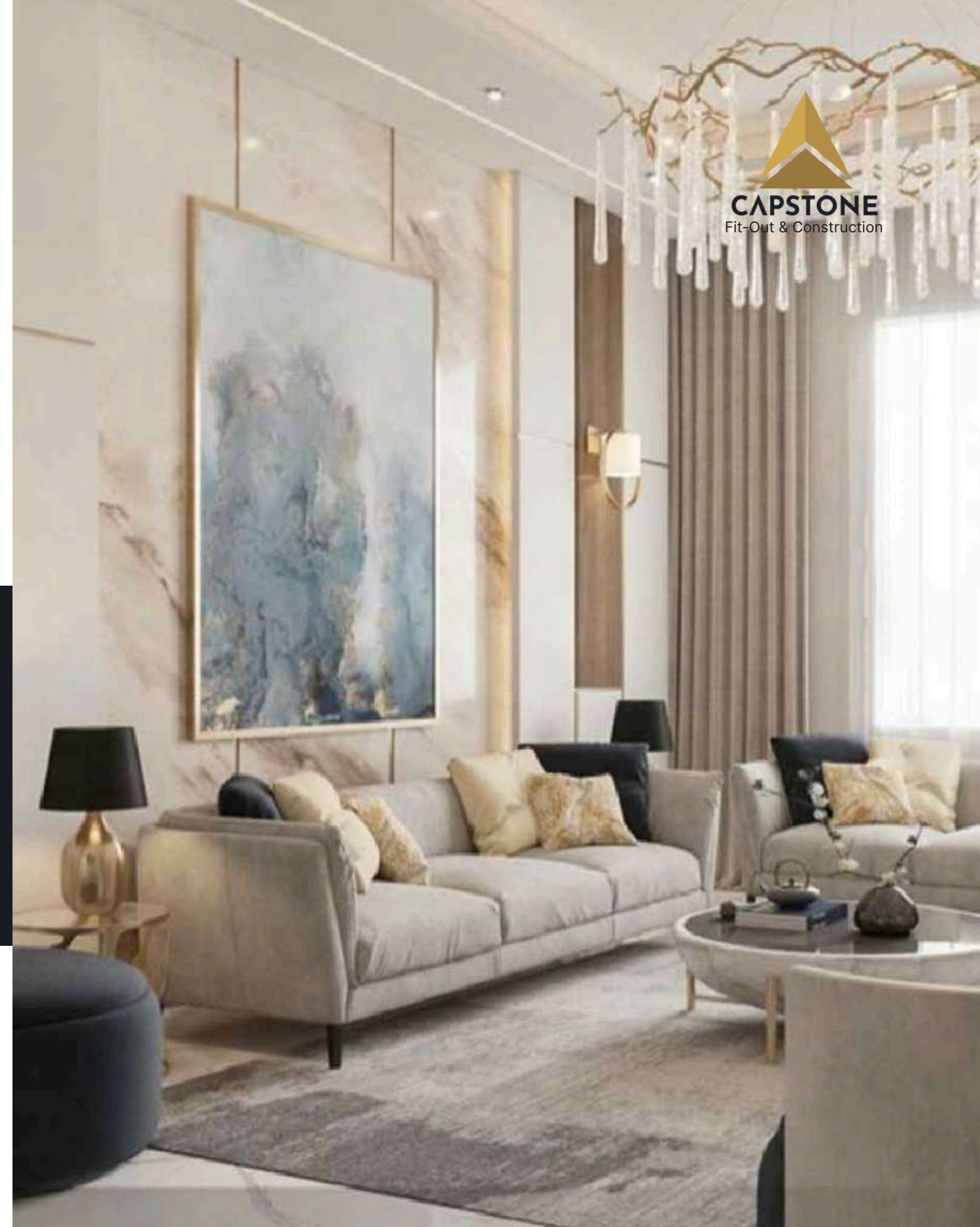
**Scope:** Design  
Fit-Out  
Fully Furnished

**Location:** Hyde Park Compound

**Client:** Private Client

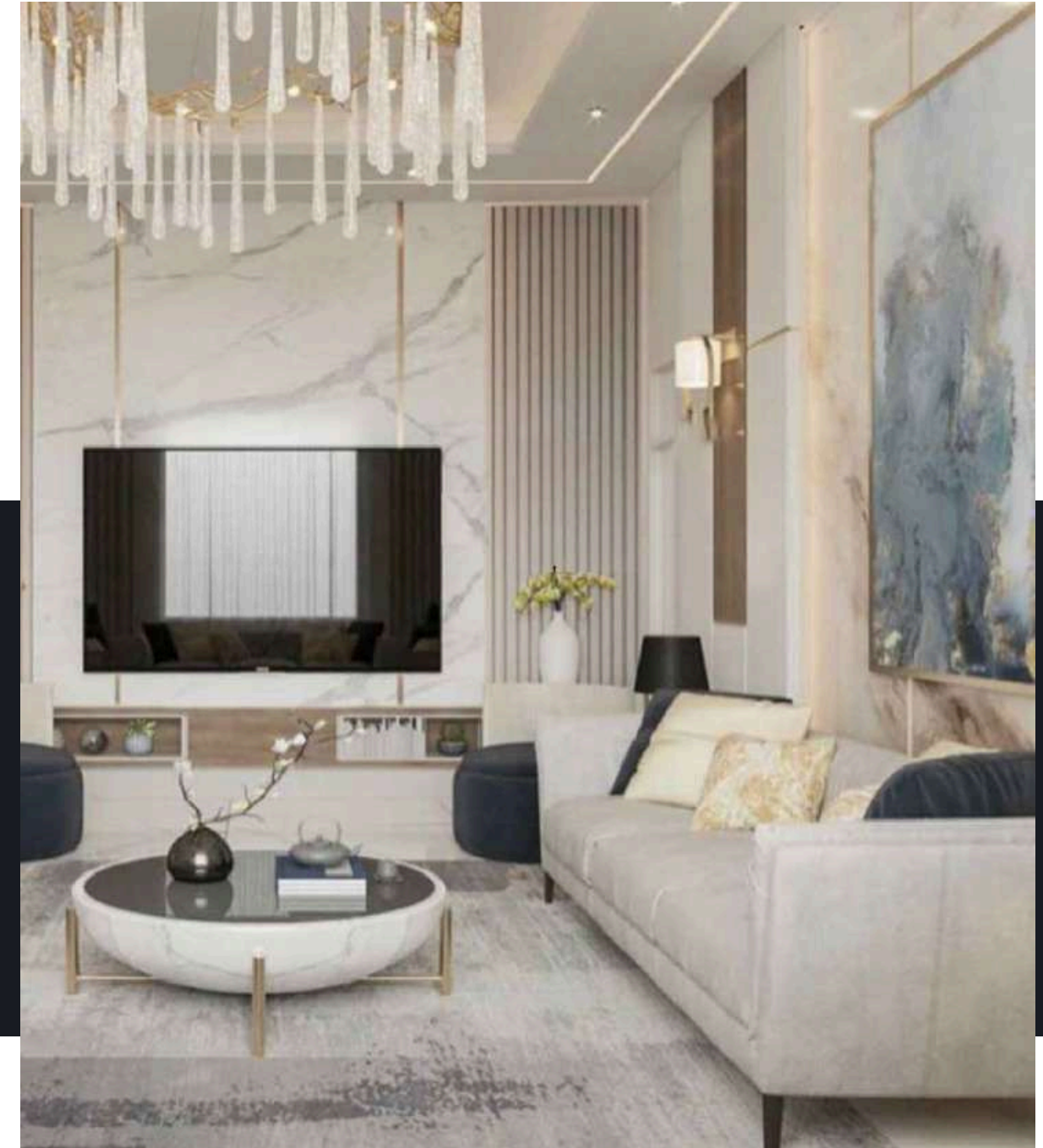
Residential

81





# MASTER BEDROOM & RECEPTION





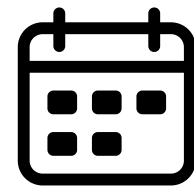
# FIT-OUT: RESIDENTIAL MIVIDA VILLA



4.6M EGP



Completed



2023

## Mivida Compound Villa

**Role:** Design & Contracting

**Scope:** Design  
Fit-Out  
Fully Furnished

**Location:** Mivida Compound

**Client:** Private Client

Residential

83





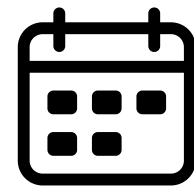
# FIT-OUT: RESIDENTIAL MIVIDA APARTMENT



2M EGP



Completed



2022

## Mivida Compound Apartment

**Role:** Design & Contracting

**Scope:** Design  
Fit-Out  
Fully Furnished

**Location:** Mivida Compound

**Client:** Private Client

Residential

84





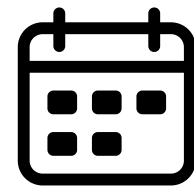
# FIT-OUT: RESIDENTIAL SHOROUK GARDENS



4.1M EGP



Completed



2020

## Shorouk Gardens Compound Villa

**Role:** Design & Contracting

**Scope:** Design  
Fit-Out  
Fully Furnished

**Location:** Shorouk Gardens Compound

**Client:** Private Client

Residential

85





# MASTER BEDROOM & RECEPTION





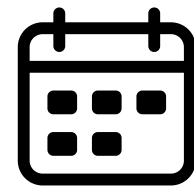
# FIT-OUT: RESIDENTIAL HYDE PARK VILLA



3.7M EGP



Completed



2019

## Hyde Park Villa

**Role:** Design & Contracting

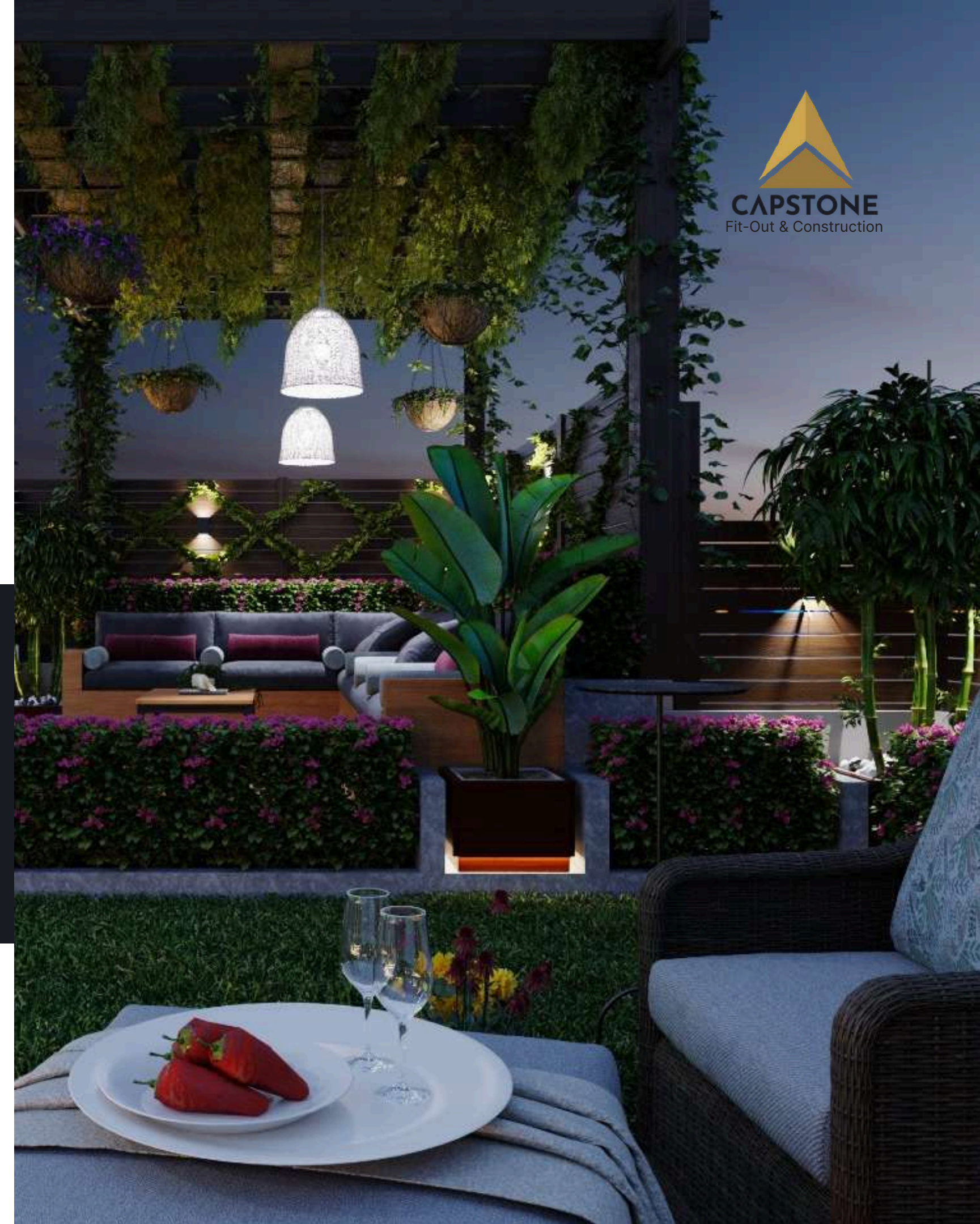
**Scope:** Design  
Fit-Out  
Fully Furnished

**Location:** Hyde Park Compound

**Client:** Private Client

Residential

87





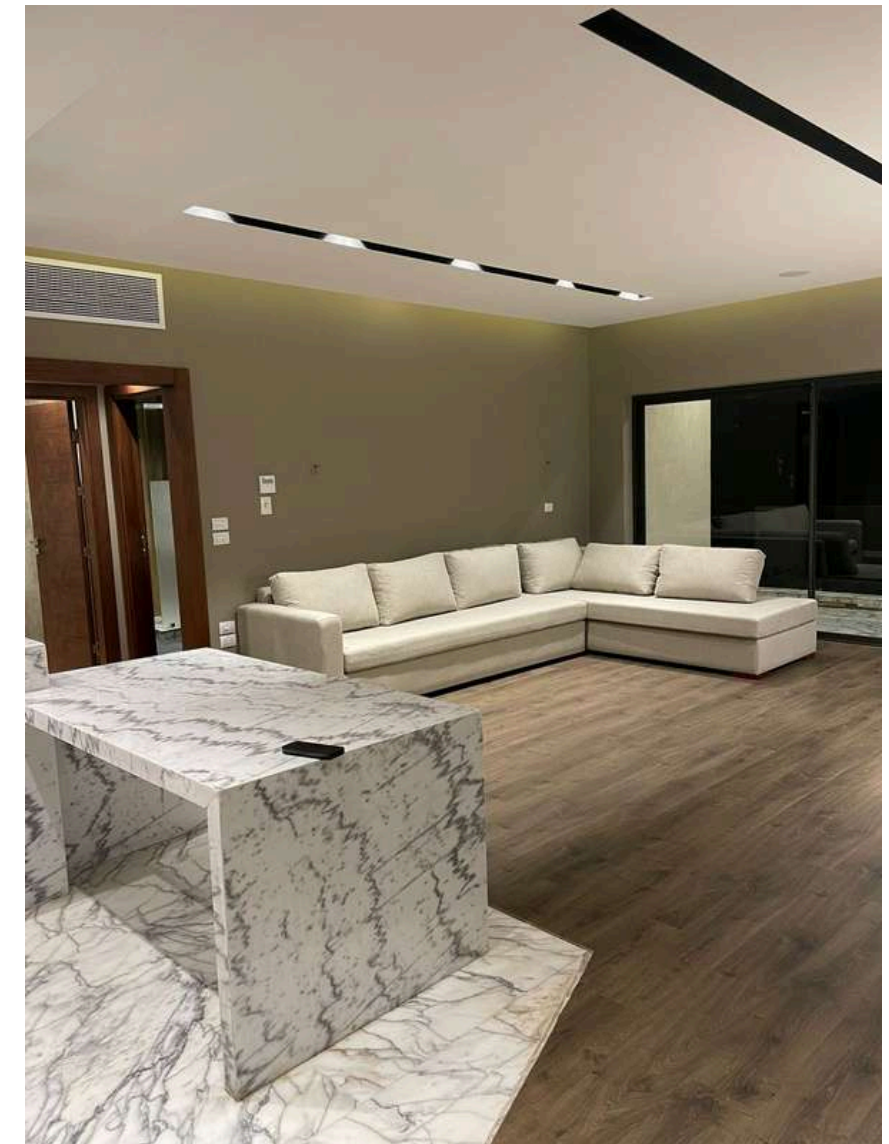
# OUTDOOR





# REAL SHOTS: RESIDENTIAL

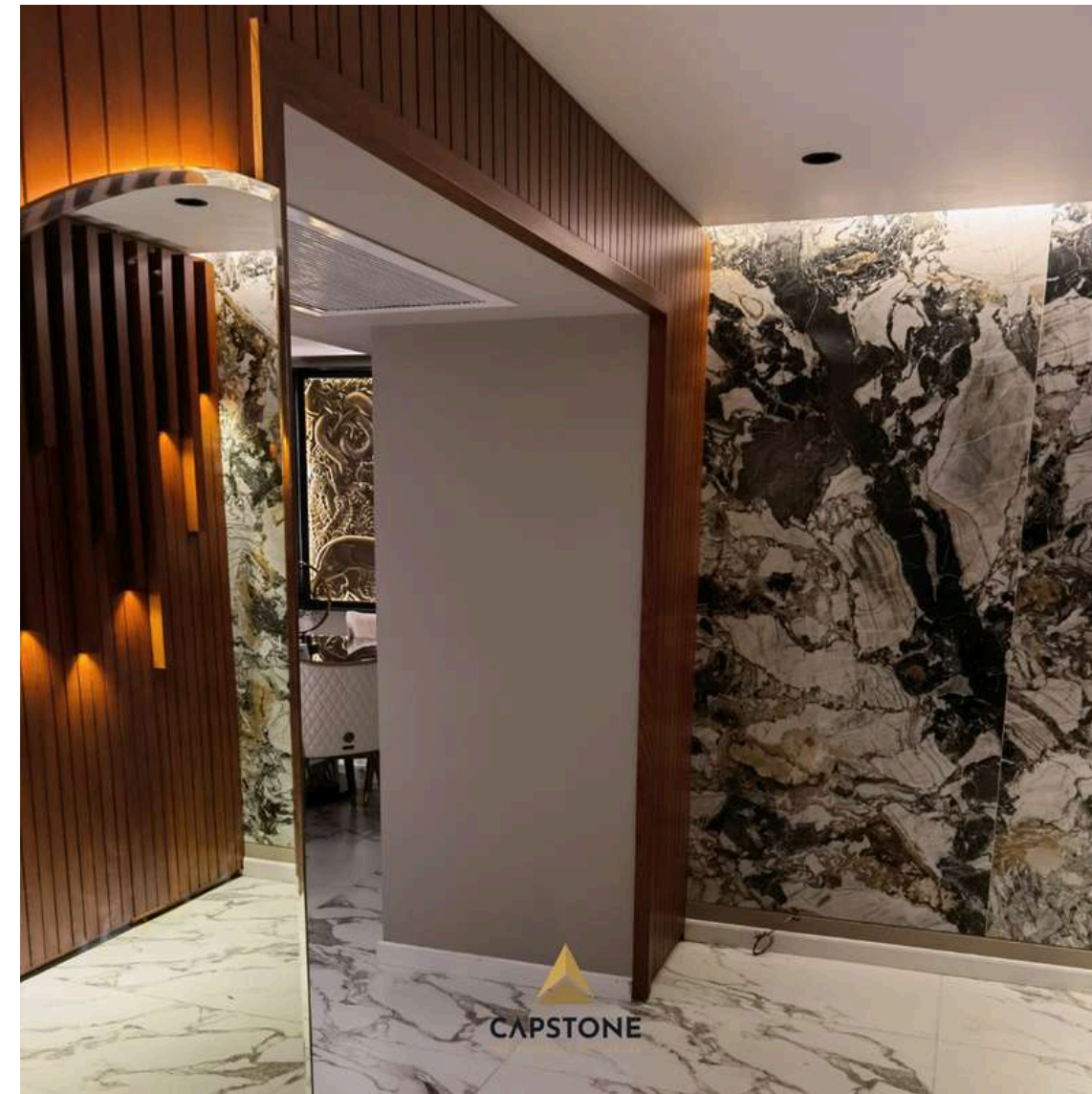
# REAL SHOTS





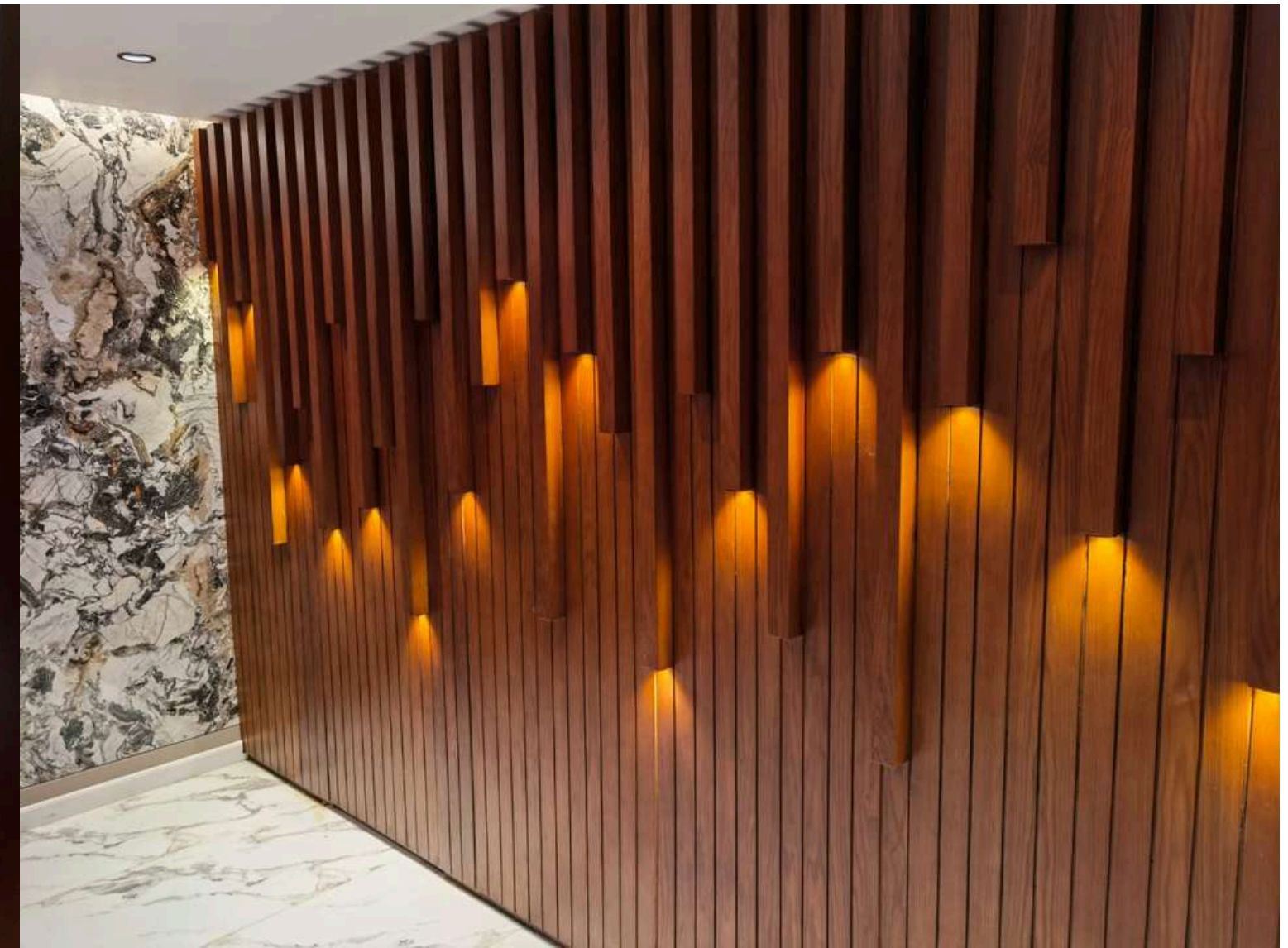
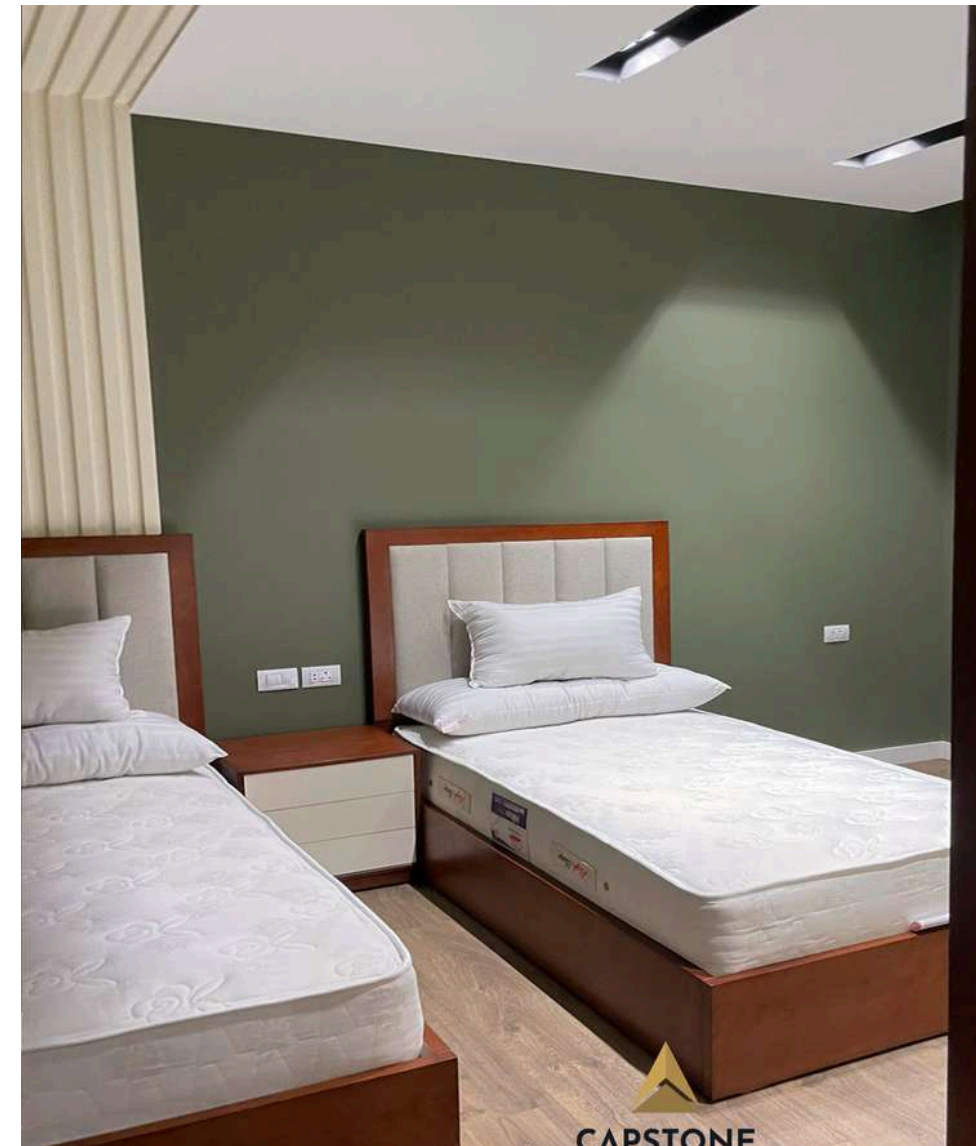
# REAL SHOTS: RESIDENTIAL

# REAL SHOTS





# REAL SHOTS: RESIDENTIAL REAL SHOTS





# REAL SHOTS: RESIDENTIAL

# REAL SHOTS





# THANK YOU

- +2 01066606566
- [info@capstone-eg.org](mailto:info@capstone-eg.org)
- <https://capstone-eg.org/>
- Mohamed Nagib Axis, New Cairo 1